

Registering to Massachusetts Clean Energy Center Production Tracking System (MassCEC PTS) from the SolarEdge Monitoring Portal - Application Note

Contents

Registering to Massachusetts Clean Energy Center Production Tracking System (MassCEC PTS) from the SolarEdge Monitoring Portal - Application Note	1
Version History	1
Introduction	1

Version History

- Version 1.0, May 2019: First version of this document
- Version 1.1, January 2021: Added a new meter to eligible revenue grade meter list
- Version 1.2, February 2021: Added eligible meters supported

Introduction

SolarEdge is an approved Independent Verifier with MassCEC PTS, and offers reporting service for eligible SolarEdge PV systems up to 1 MWp, with revenue grade meter, in the state of Massachusetts, through the SolarEdge monitoring portal. Independent Verifiers are third party reporters that report energy generated by eligible PV systems to the MassCEC Production Tracking System. For compensation and SREC trading related questions talk to your aggregator.

Requirements

1. System must have a revenue grade meter installed, see eligible meters in Table 1 below.
2. System size up to 1 MWp.
3. System ID provided by the SREC aggregator.
4. Reliable internet connectivity from the inverter.

Eligible Meter Part Number	Massachusetts
SE-RGMTR-1D-240C-A	✓
RWNC-3D-240-MB	✓
RWND-3D-240-MB	✓
RWNC-3Y-480-MB	✓
RWND-3D-480-MB	✓
RWNC-3Y-208-MB	✓
RWND-3D-208-MB	✓
SE-RGMTR-1D-240C-B	✓
SE-RGMTR-3Y-208V-A	✓
SE-RGMTR-3D-208V-A	✓
SE-RGMTR-3Y-480V-A	✓

Table 1: Eligible revenue grade meters

Reporting

Massachusetts Clean Energy Center has a set ten-day reporting window open over two months, that spans last five days of the month being reported and first five days of the next month. SolarEdge attempts to report each system each day during the reporting window, until the system has successfully reported.

For example, when reporting for the month of March, SolarEdge will attempt to report production starting from March 27th through April 5th. If the generation is successfully reported to MassCEC PTS on March 28th, the generation from remaining three days of March will be rolled into generation to be reported in April. This may result in a mismatch between a month's generation reported to MassCEC PTS and total generation on SolarEdge monitoring portal for that month.

Enabling Automated Reporting

The system installer must enable the automated reporting for a system through their installer account with the SolarEdge monitoring portal. The system must be approved by MassCEC.

To enable the feature, follow the steps, as shown in Figure 1 below.

1. In the SolarEdge monitoring portal, open Site's Administration page and choose the "Meter Reporting" tab.
2. Under Automatic Energy Reporting select 'MassCEC PTS' from Production Tracking System dropdown.
3. Review and agree to the Terms and Conditions
4. Enter the system ID as provided by the SREC aggregator under PTS System ID. Make sure correct system ID is entered, as SolarEdge is unable to verify the system ID until the system attempts to report for the first time.
5. Click Save. The system will validate the system ID with the reporting service.

The screenshot shows the SolarEdge monitoring portal interface. At the top, there are navigation icons for Dashboard, Layout, Charts, Reports, Alerts, and Admin (highlighted with a red box). Below the navigation is a search bar for sites. The main content area shows the 'Meter Reporting' tab selected. Under 'Automatic Energy Reporting', the 'Production Tracking System' dropdown is set to 'MassCEC PTS'. A checkbox is checked, indicating agreement to the terms and conditions. The 'PTS System ID' field is empty. At the bottom right, there are 'Cancel' and 'Save' buttons.

Figure 1: Meter Reporting tab under Admin

End User View

Once enabled, the information reported and the system status can be seen in the site's Dashboard, as shown in figure 2 below.

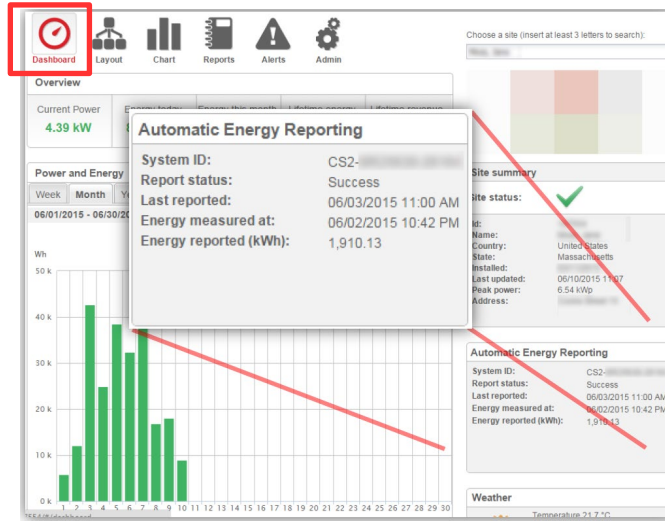


Figure 2: Dashboard View