

ZigBee/Wi-Fi Antenna Installation

Kit Contents

- Antenna with the attached clip and cable

Safety Information

Please review the following safety guidelines, and observe them when handling the equipment.

- Always power down the inverter before opening the unit. Perform the following steps:
 - Switch the inverter's ON/OFF switch to OFF, and wait five minutes for the capacitors to discharge
 - Cut off AC power to the inverter by turning off the circuit breakers on the power distribution panel.
- **WARNING! ELECTRICAL SHOCK HAZARD.** When the inverter is powered on, do not touch uninsulated wires when the inverter cover is removed.
- When closing the inverter cover, make sure the cover is correctly fastened (as described in the installation guide) to ensure proper sealing.

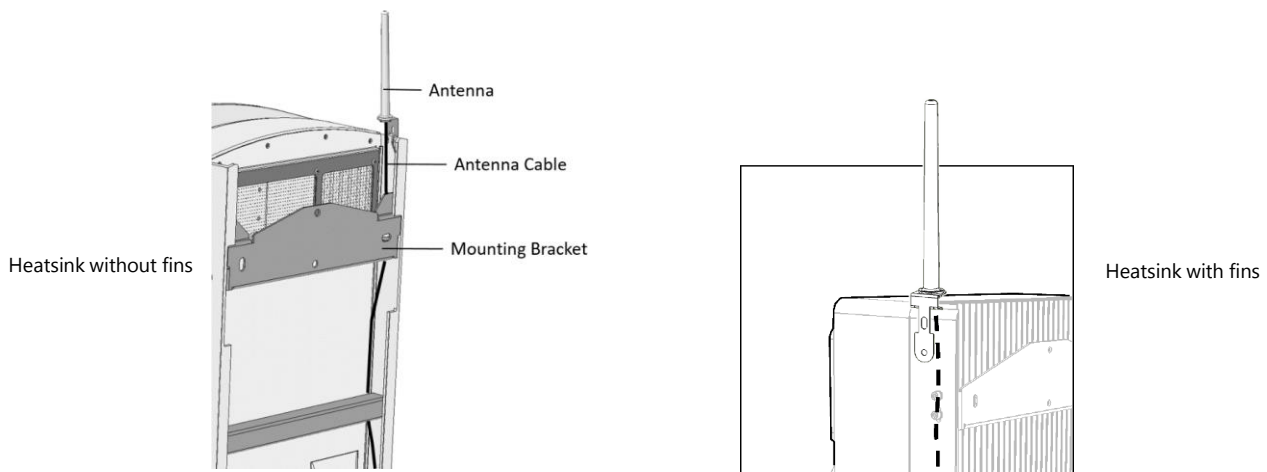
Installing the Antenna

1. Open the inverter cover as described in the inverter installation guide.
2. Install the antenna in one of the three ways.
 - Clip the antenna to the inverter side or heatsink fins and pass the cable between the inverter and mounting bracket.



NOTE

For maximum range, make sure to position the antenna upright.



- Clip the antenna to the L shaped bracket (not supplied by SolarEdge) attached to a vertical surface. SolarEdge recommends using a bracket with the following dimensions:

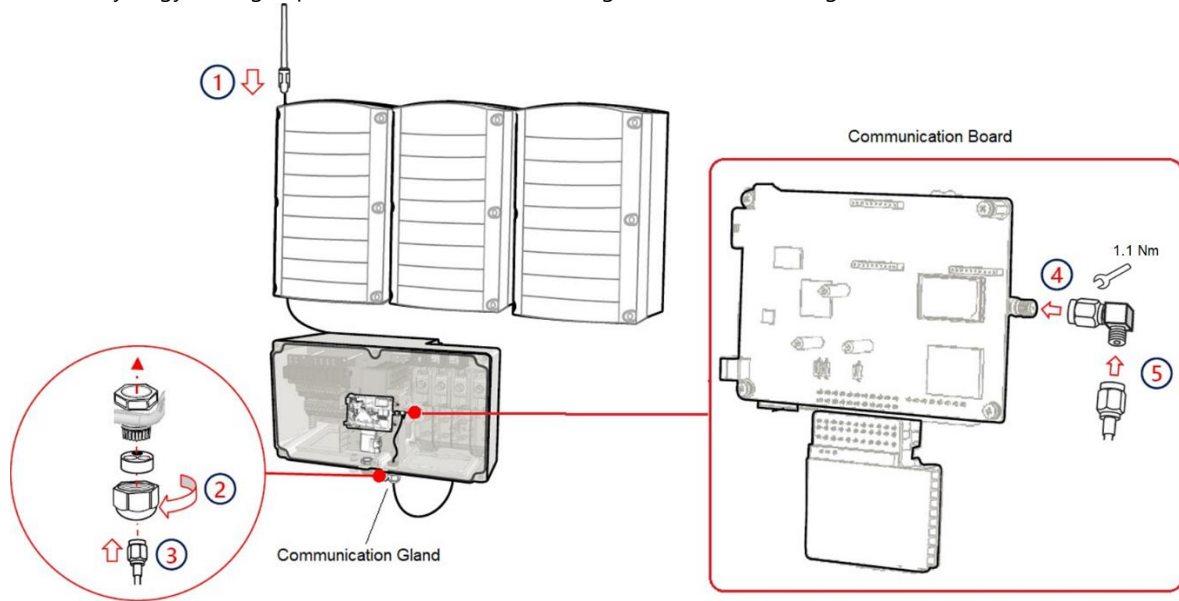


NOTE

This option is only applicable for StorEdge Single Phase Inverters.



- For the Synergy manager, pass the antenna cable through a communication gland at the bottom of the inverter.



3. Connect the antenna cable to the antenna connector on the communication board or ZigBee/Wi-Fi plug-in.

Antenna Specifications

Model number – AS4032-1	
Frequency Range	2.4 – 2.5 GHz
V.S.W.R	2.1:1
Antenna Type	Co-linear Dipole
Radiation	Omni Directional
Gain (Max)	5 dBi
Polarization	Linear
Max Input Power	5 W
Vertical Beam- width	30°
Horizontal Beam- width	360 Deg
Impedance	50 Ohm
Antenna design	Dipole Array
Internal Material	PCB + spring
Cable	RG316
Connector	RP SMA
Mechanical	
Length	265 mm
Diameter	30 mm
Cable length (Max)	200 cm
Antenna Weight	67 gr
Application	Indoor\Outdoor
Base Material	PC Lexan 503R-WH5151L or WH8G952 Sabic
Storage temperature	-40 to +85
Operating Temperature	-40 to +85
Storage Humidity	10% ~ 90% non-condensing
Operating Humidity	5% ~ 90% non-condensing