

solar**edge**

Optimizing Commercial PV Systems

More power, more
revenue, and more
insight into your
system performance

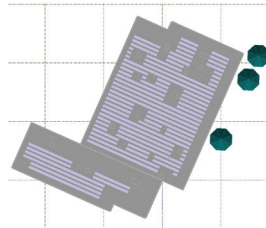


/ Improve Your Bottom Line

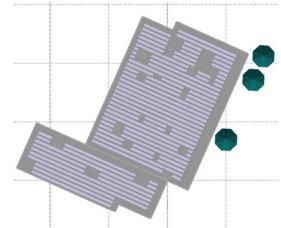
More power from your rooftop

Increase your system capacity with more modules on the roof

Flexible site design > More modules on the roof > **More power**



Traditional inverter | 149.5kW DC

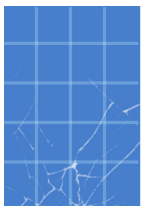


SolarEdge | 200kW DC
34% more power

Optimized module production

SolarEdge mitigates power losses due to mismatch between modules for maximum power generation from each module. With SolarEdge, weaker modules do not affect the strong ones. Performance benefits validated by leading third-party testing facilities.

Common reasons for module performance mismatch sources



Transportation damage



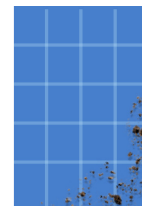
Different tilt & orientation



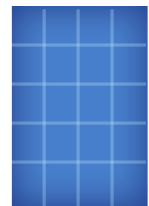
Thermal mismatch



Partial shading



Soiling



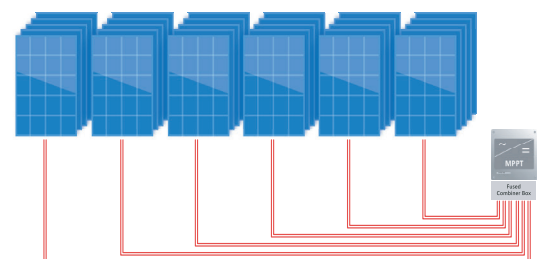
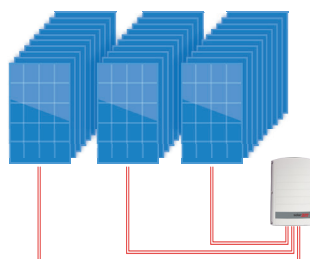
Manufacturing tolerance

Simplified electrical design

Less electrical components for lower cost and improved reliability

 SolarEdge DC optimized inverter

 Traditional inverter



/ Secure Your Investment

Cost saving maintenance

- / Free module-level monitoring for 25 years
- / Maintenance teams "Know Before They Go" reducing truck rolls to solve issues
- / Connect on the go and monitor your system on your phone, tablet, or computer
- / Low Cost of Ownership:
 - / 25-year warranty on power optimizers
 - / 12-year warranty on inverter – low-cost extension to 20 years

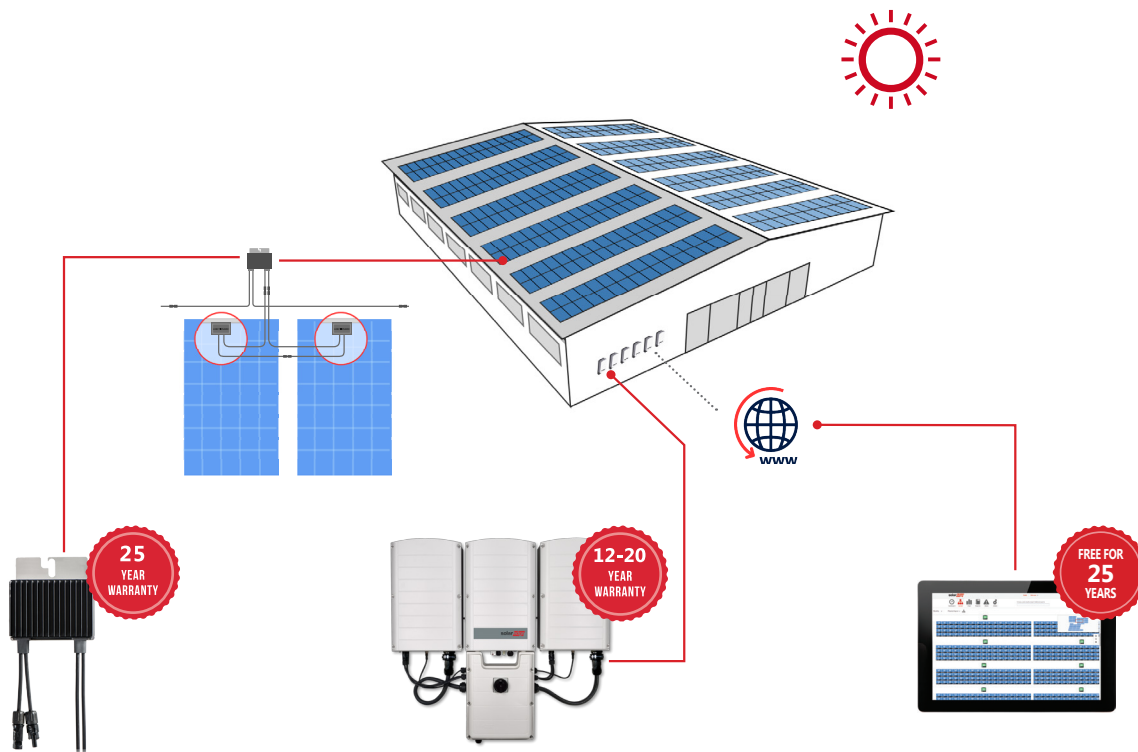


Peace of mind

- / Proven third-party tested system backed by best-in-class warranty
- / Advanced safety system completely de-energizes the entire array
- / Better suited for future insurance requirements
- / Compliant with NEC 2014 and 2017
- / UL1741 SA certified, for CPUC Rule 21 grid compliance



More Power • More Revenue • More Insight



2-to-1 optimization for 60 and 72-cell modules

- // Module-level MPPT - no mismatch power losses
- // Strings of uneven length, modules on multiple azimuths and tilts
- // Compatible with SolarEdge three phase inverters (see specifications)
- // SafeDC™ - designed for automatic module-level safety shutdown

SE9-SE43.2K (208V grid) ; SE10K-SE100K (277V/480V grid)

- // Specifically designed to work with power optimizers
- // Superior efficiency
- // Easy installation, including 2-person install for large capacity models
- // Built-in communication gateway
- // Simple, step-by-step inverter activation and commissioning with the SetApp mobile application

Monitoring platform

- // Full visibility of system performance
- // Remote, module-level troubleshooting

About SolarEdge

SolarEdge is a global leader in smart energy technology. By deploying world-class engineering capabilities and a relentless focus on innovation, we create smart energy products and solutions that power our lives and drive future progress.

- f SolarEdge
- 🐦 @SolarEdgePV
- 📷 @SolarEdgePV
- 📺 SolarEdgePV
- in SolarEdge
- ✉ infoNA@solaredge.com

solaredge

solaredge.com

© SolarEdge Technologies, Inc.
All rights reserved.
Rv: 03/2020/V01/NAM.
Subject to change without notice.