

solar**edge**

# Optimising Commercial PV Systems

More power,  
more revenue, and  
more insight into your  
system performance



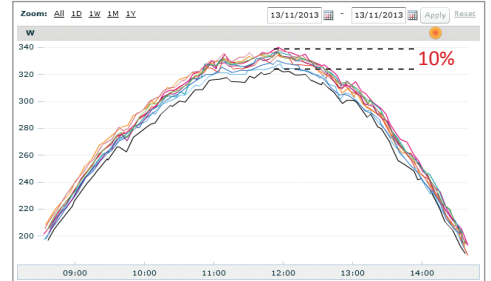
# / Improve Your Bottom Line

## Harvest more power from each panel

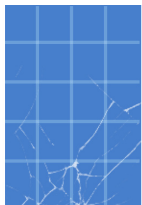
SolarEdge mitigates power losses due to mismatch between panels for maximum power generation from each panel. With SolarEdge, weaker panels do not affect the strong ones.

### 10% panel mismatch

Screenshot from the SolarEdge monitoring platform, showing power curves of 10 adjacent panels in a string with 10% mismatch between highest and lowest performing panels



## Common reasons for panel performance mismatch



Transportation damage



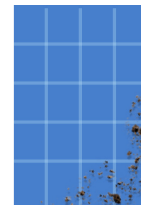
Different tilt & orientation



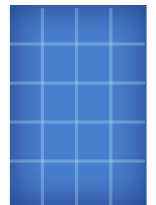
Thermal mismatch



Partial shading



Soiling



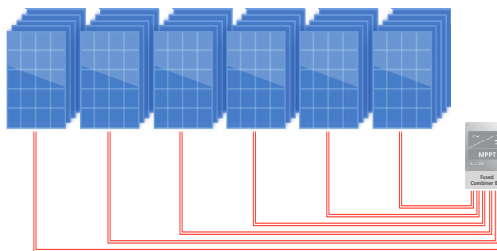
Manufacturing tolerance

## Cost saving by design

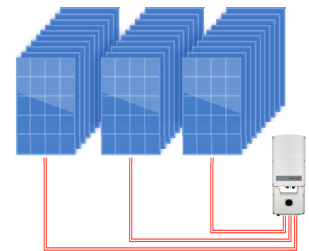
Save 50% on electrical BoS with longer strings

27-60 panels, up to 15kW per string

■ Traditional inverter



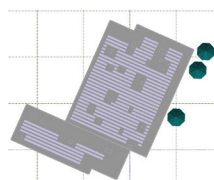
■ SolarEdge DC optimised inverter



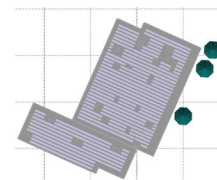
## More energy by design

Increase your system capacity with more panels on the roof

Flexible site design > More panels on the roof > **More power**



Traditional inverter | 149.5kW DC

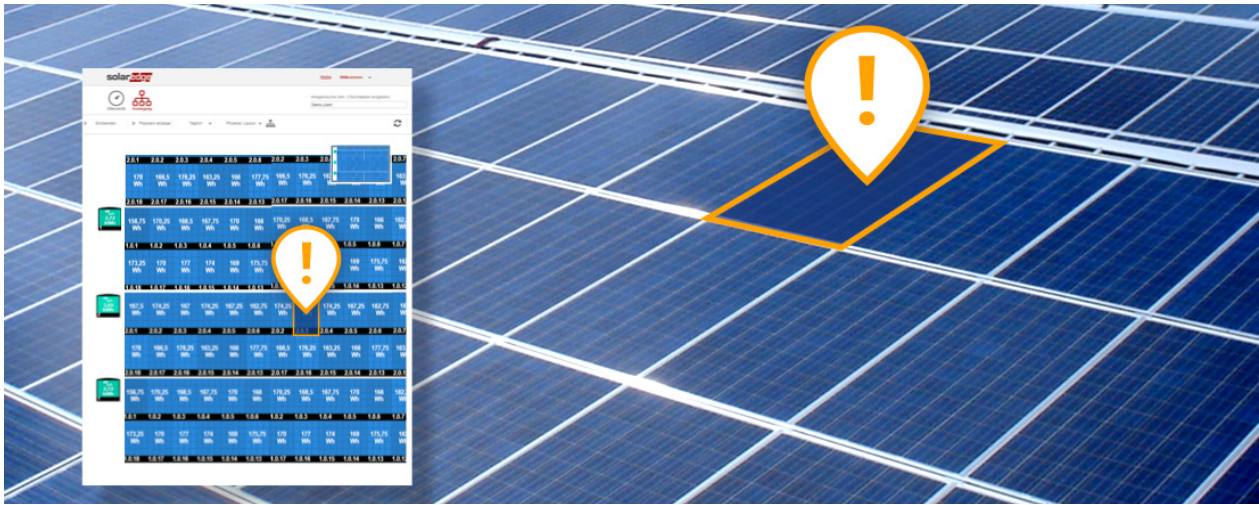


**SolarEdge | 200kW DC**  
**34% more power**

# / Secure Your Investment

## Cost-saving maintenance

- / Free panel-level monitoring for 25 years
- / Full control of your assets
- / Panel-level performance monitoring and remote maintenance lead to:
  - / Less trips to site and less time spent on-site
  - / Higher system uptime
- / Complete system status on your mobile device



## Future compatibility and warranty

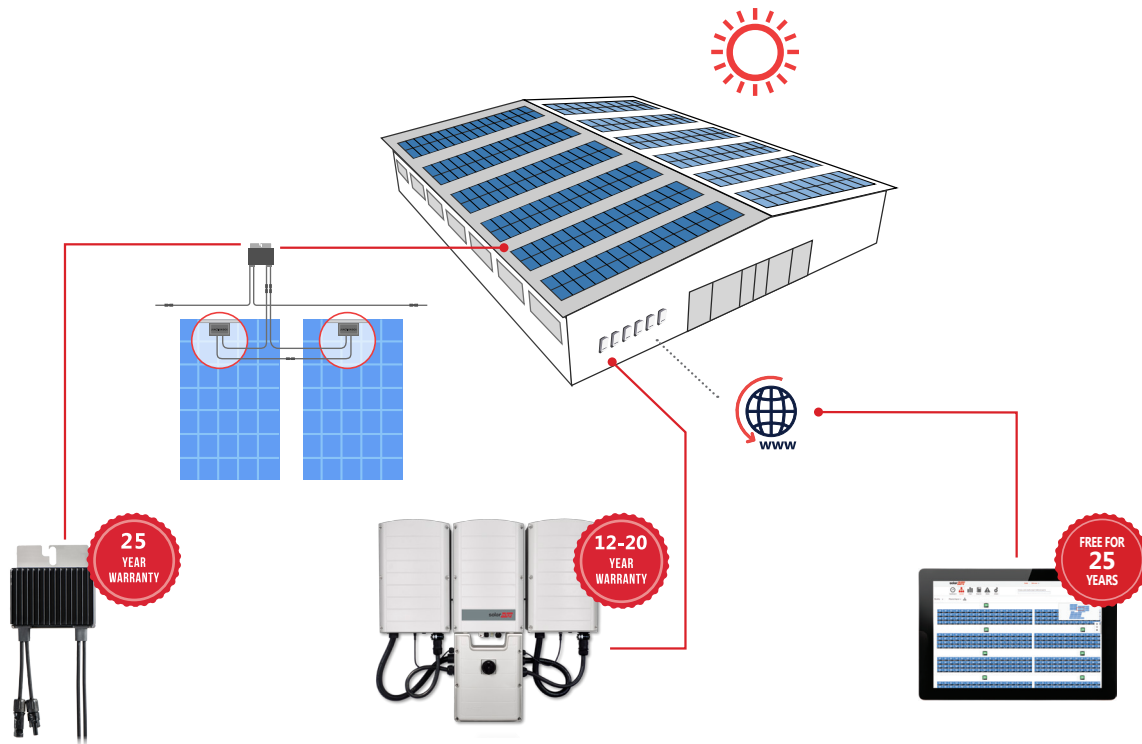
- / Low cost inverter replacement out of warranty
- / Future panel compatibility (replacement and extension)
  - / New panels can be utilised in the same string with old ones

## Protecting your assets

- / Providing the highest safety for installers, electricians, and firefighters
- / Better suited for future insurance requirements



# / More Power, More Revenue, More Insight



## Power optimisers 2:1 and 4:1 configurations

- / Panel-level MPPT - no mismatch power losses
- / Lower BOS costs by connecting to two or four panels, in series or in parallel
- / Strings of uneven length, panels on multiple azimuths and tilts
- / SafeDC™ - designed for automatic panel-level safety shutdown

## 15kW-100kW three phase inverters

- / Specifically designed to work with power optimisers
- / Superior efficiency
- / Easy installation, including 2-person install for large capacity models
- / Built-in communication gateway
- / Simple, step-by-step inverter activation and commissioning with the SetApp mobile application

## Monitoring platform

- / Full visibility of system performance
- / Remote, panel-level troubleshooting

## Performance monitoring

Calculate site performance ratio and measure environmental conditions, using environmental sensors or a satellite-based service

## About SolarEdge


SolarEdge is a global leader in smart energy technology. By deploying world-class engineering capabilities and a relentless focus on innovation, we create smart energy products and solutions that power our lives and drive future progress.

- f SolarEdge
- t @SolarEdgePV
- ig @SolarEdgePV
- yt SolarEdgePV
- in SolarEdge
- ✉ australia-info@solaredge.com

**solaredge**

**solaredge.com**

© SolarEdge Technologies, Inc.  
All rights reserved.

Rv: 06/2020/V01/ENG AUS   
Subject to change without notice.