



SolarEdge Smart Modules Unpacking and Repacking Guide

MAN-01-01077-1.0

For Europe and APAC

Version 1.0

Disclaimers

Important notice

Copyright © SolarEdge Inc. All rights reserved. No part of this document may be reproduced, stored in a retrieval system or transmitted, in any form or by any means, electronic, mechanical, photographic, magnetic or otherwise, without the prior written permission of SolarEdge Inc. The material furnished in this document is believed to be accurate and reliable. However, SolarEdge assumes no responsibility for the use of this material. SolarEdge reserves the right to make changes to the material at any time and without notice. You may refer to the SolarEdge web site (www.solaredge.com) for the most updated version. All company and brand products and service names are trademarks or registered trademarks of their respective holders. The general terms and conditions of delivery of SolarEdge shall apply. The content of these documents is continually reviewed and amended, where necessary. However, discrepancies cannot be excluded. No guarantee is made for the completeness of these documents.

Note: This product is intended to provide remote shutdown of the SolarEdge PV harvesting system to enable safer access to a building in the event of fire. This product DOES NOT reduce the risk of fire or protect firefighters or others accessing a building in the event of a fire. The images contained in this document are for illustrative purposes only and may vary depending on product models.

Emission compliance

This equipment has been tested and found to comply with the limits applied by the local regulations. These limits are designed to provide reasonable protection against harmful interference in a residential installation. This equipment generates and radiates radio frequency energy and, if not installed and used in accordance with the instructions, may cause harmful interference to radio communications. However, there is no guarantee that interference will not occur in a particular installation. If this equipment does cause harmful interference to radio or television reception, which can be determined by turning the equipment off and on, you are encouraged to try to correct the interference by one or more of the following measures: Reorient or relocate the receiving antenna.

- Increase the separation between the equipment and the receiver.
- Connect the equipment into an outlet on a circuit different from that to which the receiver is connected.
- Consult the dealer or an experienced radio/TV technician for help.

Changes or modifications not expressly approved by the party responsible for compliance may void the user's authority to operate the equipment.

Revision History

- Version 1.0, May 2024 – Initial release

Contents

Disclaimers.....	2
Important notice.....	2
Emission compliance.....	2
Important safety instructions.....	4
General safety.....	4
Introduction.....	4
Limitation of liability	4
Unpack the modules.....	4
Repack modules for transportation	7
Appendix 1: Repackaging materials list.....	10
Appendix 2: Repackaging materials drawings	10
Carton box.....	10
Base plate.....	11
Carton top cover	11
Wooden pallet.....	12
Long paper corner	12
Short paper corner (30mm frame).....	13
Hard corner protectors	13
L-shaped paper corner.....	13
Foam	14
Plastic spacer-1	14
Plastic spacer-2	15

Important safety instructions

General safety

NOTES

- Do not clean the glass surface with chemicals.
- Do not drop the PV module or drop objects onto the module.
- Do not attempt to disassemble the modules, and do not remove any attached components from the modules.
- Do not scratch or otherwise harm the back sheet, the glass or the junction box. Do not pull or twist the cables or touch them with bare hands.
- Do not drill holes in the frame or scratch the insulating coating of the frame.
- Keep the module packed in the package until installation.

Introduction

This document provides detailed instructions and safety information regarding the unpacking and re-packing of SolarEdge smart modules. It does not provide any installation instructions. For installation instructions and guidelines for SolarEdge smart modules, refer to: <https://knowledge-center.solaredge.com/sites/kc/files/se-smart-modules-installation-guide.pdf>

Instructions are provided here for the packing and re-packing of smart modules for quantities of not more than 36 units (one full pallet).

IMPORTANT NOTE

This document only applies to modules with part numbers SPVxx-R54Pxx.

All instructions must be read and understood before attempting unpacking or re-packing of the smart modules.

Limitation of liability

Since SolarEdge has no control over the use of this manual and the conditions or methods of unpacking or re-packing, SolarEdge does not accept responsibility and expressly disclaims liability for loss, damage, or expense arising out of or in any way connected with such unpacking and re-packing. SolarEdge reserves the right to change this manual without prior notice.

Unpack the modules

IMPORTANT NOTES

- Smart modules are sensitive to shock and vibrations. Always handle with care.
- Wear protective gloves to protect yourself and the modules.

1. Remove the plastic film wrapped around the whole pallet.
2. Remove the straps holding the box in place.
3. Remove the top part of the box.
4. Remove the packaging materials.



... IMPORTANT NOTE

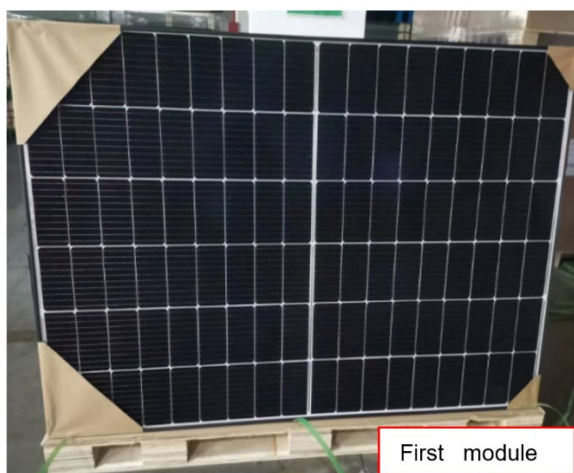
To prevent the panels from falling while removing them from the pallet, move the whole pallet next to a wall or other firm support structure, as shown below.



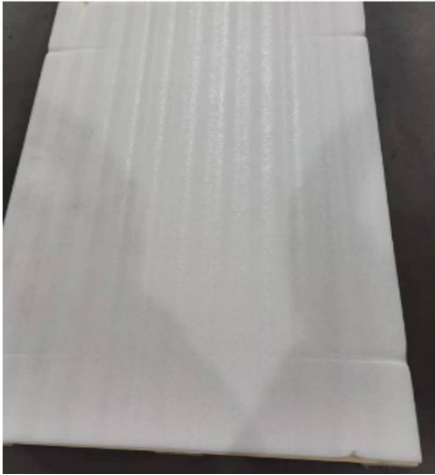
5. Cut off all remaining straps and remove any remaining packaging materials.
6. Remove the modules one by one.

... IMPORTANT NOTES

- At least two people must carry one module.
- Carry the module with one person on each of the short sides of the module.
- Before proceeding, verify that the first module removed was packed originally with its glass surface facing outwards from the box.



7. First place a piece of foam on another pallet.



IMPORTANT NOTE

Make sure that the pallet is clear of any debris such as nails, etc.

8. Place the first module with its glass facing the foam (downwards) onto the empty pallet.



9. Place plastic spacers at the four corners and in the middle of the long side.



10. Place the next module glass face down onto the spacers making sure that the Power Optimizers are all in the same orientation, and that all the spacers are aligned correctly.



11. Continue placing the modules as above until a maximum of 20 modules are on the pallet.



Repack modules for transportation

1. Prepare the base of the pallet with cardboard and straps as shown.



2. Carefully attach long paper corners to each of the four corners of each of the modules.



3. Place the first module onto the pallet with the Power Optimizer located at the bottom of the module, and the glass side facing outwards.

4. Place the second module next to the first module with its back side facing the first module.



... IMPORTANT NOTES

- If there are fewer than 36 modules on the re-packed pallet, split the modules evenly to each side of the pallet and add foam in-between each half of the modules in the center of the pallet.
- If the number of modules is odd (eg 17) you can split the modules nine (9) on one end of the pallet, and eight (8) on the other end of the pallet, with foam pieces in-between.



5. Continue packing the modules in this way, making sure that the glass face of one module never faces the back side of the next module, and all Power Optimizers are at the bottom of the modules.
6. Record the serial numbers of each module by scanning each module's barcode.
7. Place a piece of foam in between each module as they are stacked onto the pallet.
8. Make sure that when all the modules are on the pallet, they are centered on the pallet.



9. Tie all the modules together using the straps as shown.



10. Place the cardboard box over the whole assembly of modules on the pallet.

11. Wrap the box completely with plastic film.

12. Using cardboard edge protectors at each corner and seven (7) straps, tie up the box firmly.



IMPORTANT NOTES

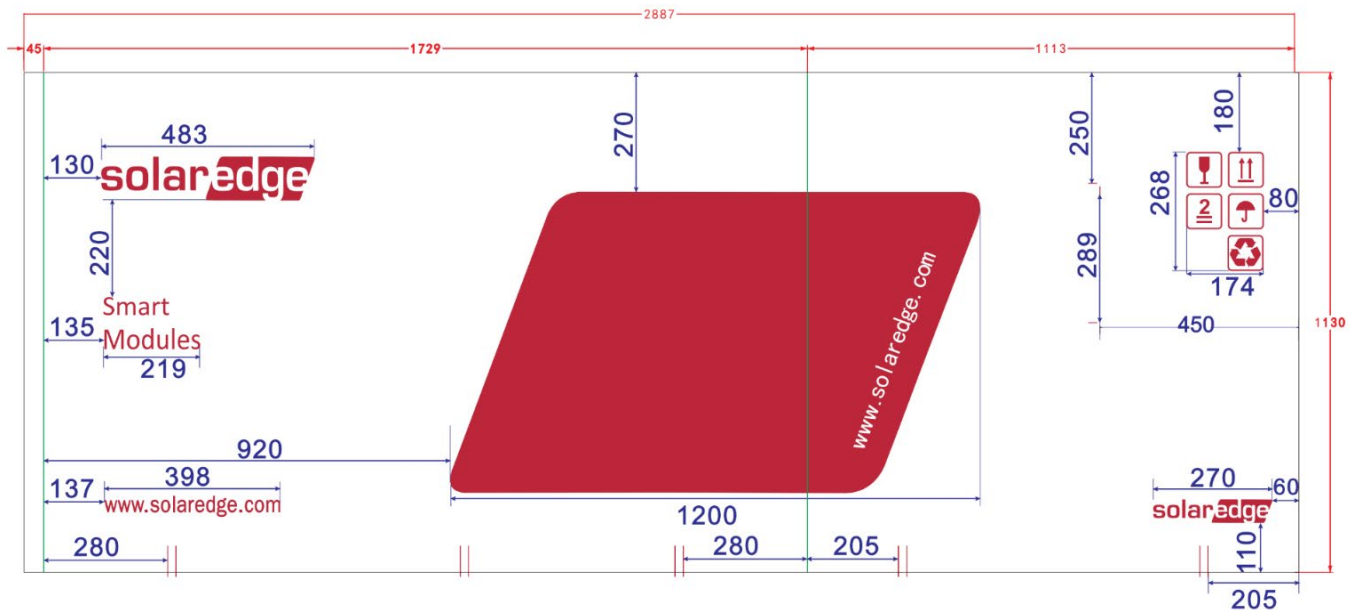
- To avoid damage to modules, do not double-stack pallets that are not completely full (36 modules in each).
- Do not place an inverter box on top of a pallet if the pallet is not completely full.
- An inverter box may only be placed on top of a full pallet.
- At least ten (10) modules must be on a pallet for transportation.

Appendix 1: Repackaging materials list

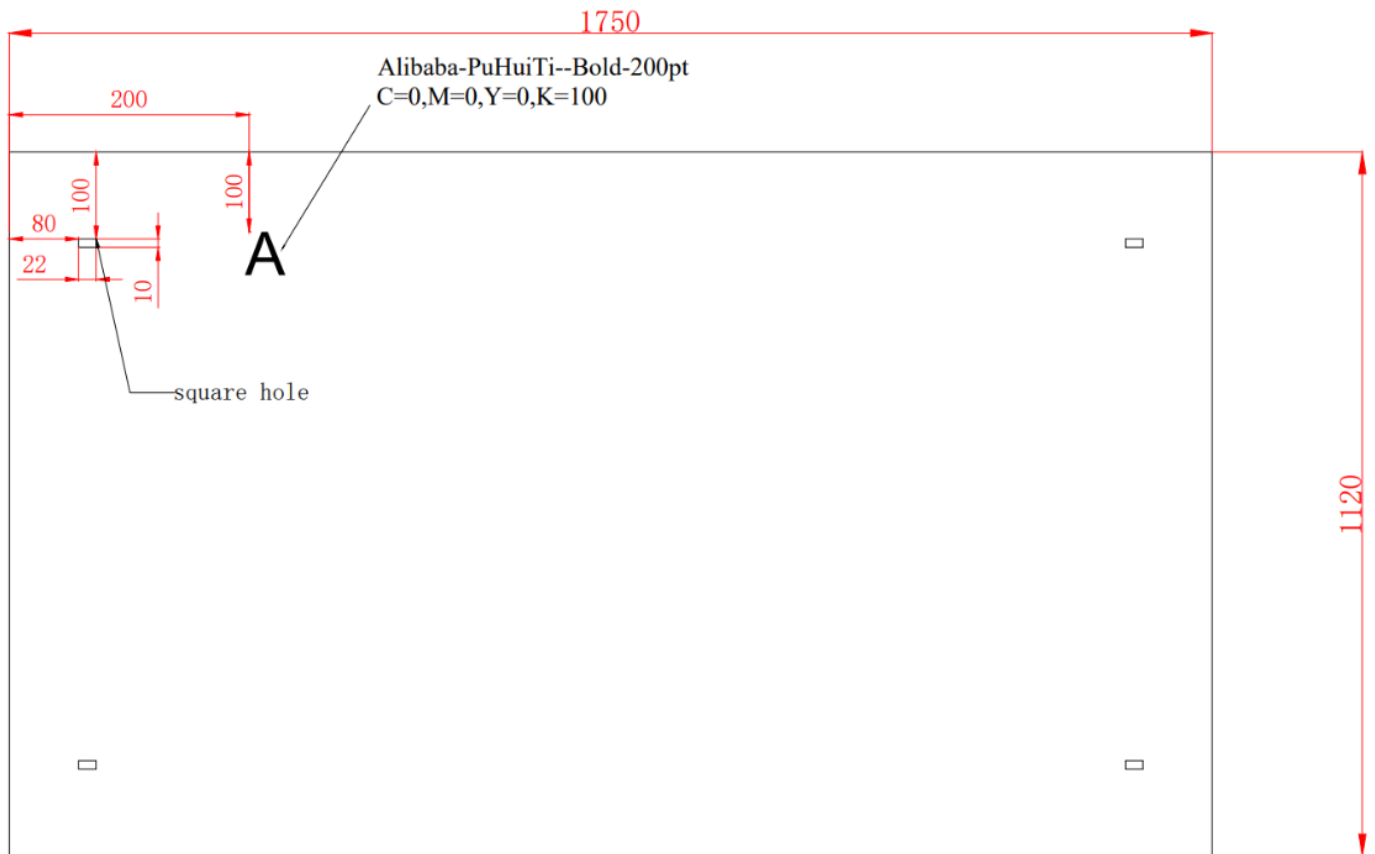
Items	Type	Raw Material Classification	QTY per kit(36 pcs)	Weight[kg]	Total Weight[kg]
1	Carton box	Cardboard	1	5.9	5.9
2	Base plate	Cardboard	1	3.2	3.2
3	Carton top cover Regular	Cardboard	1	3.3	3.3
4	Wooden pallet	Wood	1	36.81	36.81
5	Long paper corner	Cardboard	72	0.03	2.16
6	Short paper corner	Cardboard	72	0.0036	0.2592
7	Hard corner protectors	Cardboard	12	0.019	0.228
8	L-shaped Paper Corner	Cardboard	2	0.19	0.38
9	Foam	Foam	Based on the number of modules per pallet	0.4542	/
10	Plastic spacer-1	Plastic	Based on the number of modules per pallet	0.074	/
11	Plastic spacer-2	Plastic	Based on the number of modules per pallet	0.02	/

Appendix 2: Repackaging materials drawings

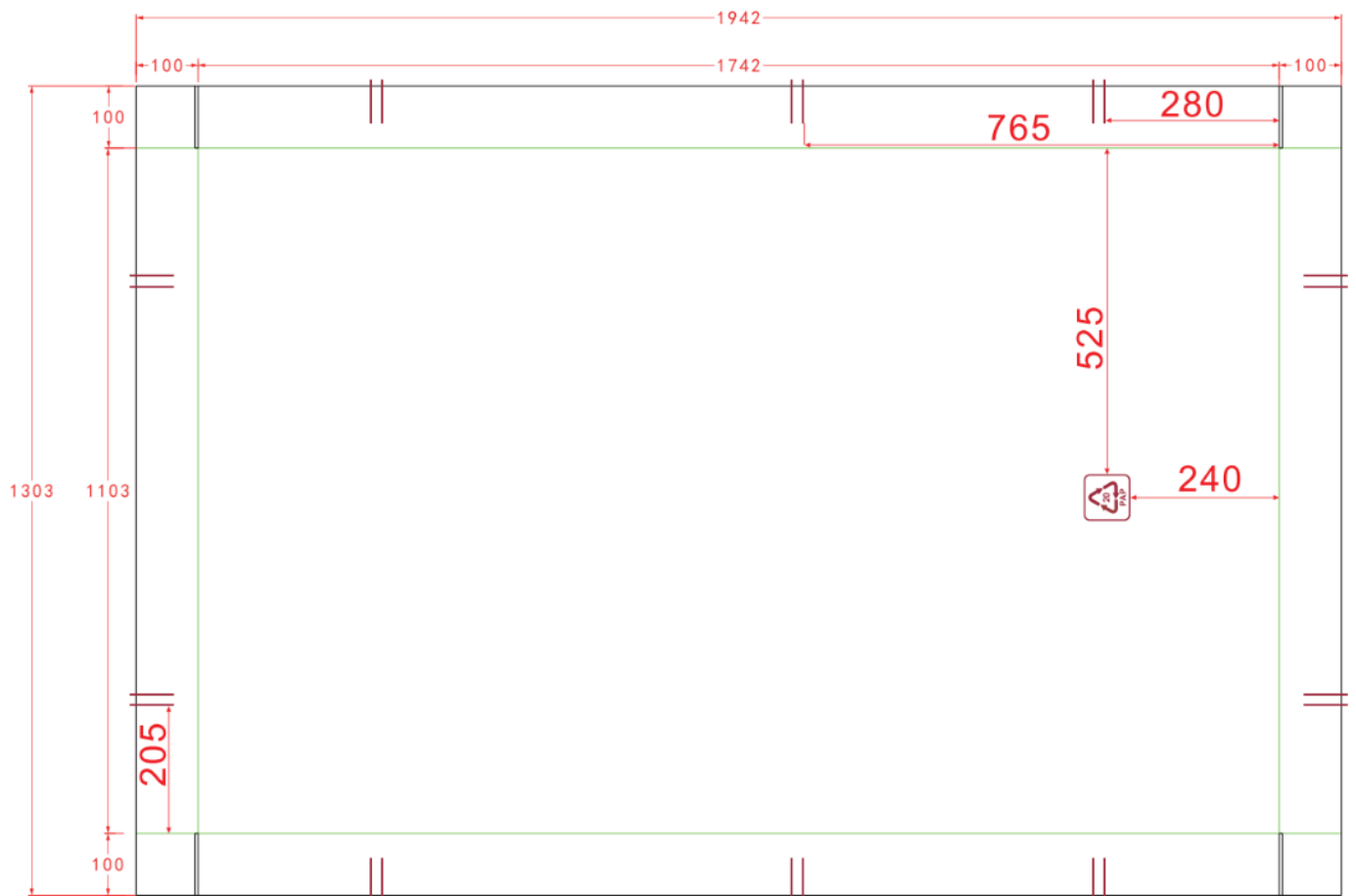
Carton box



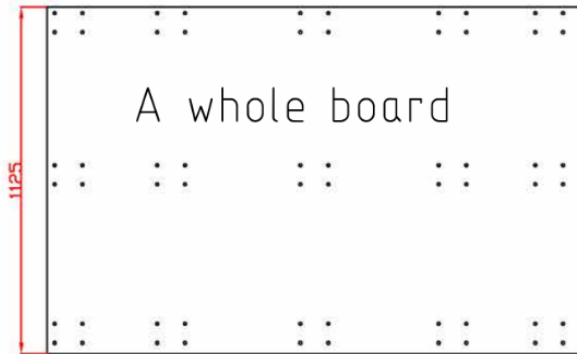
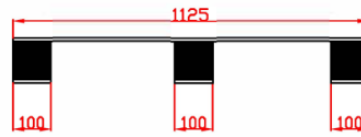
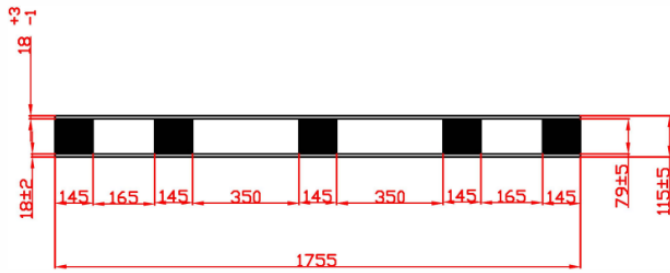
Base plate



Carton top cover



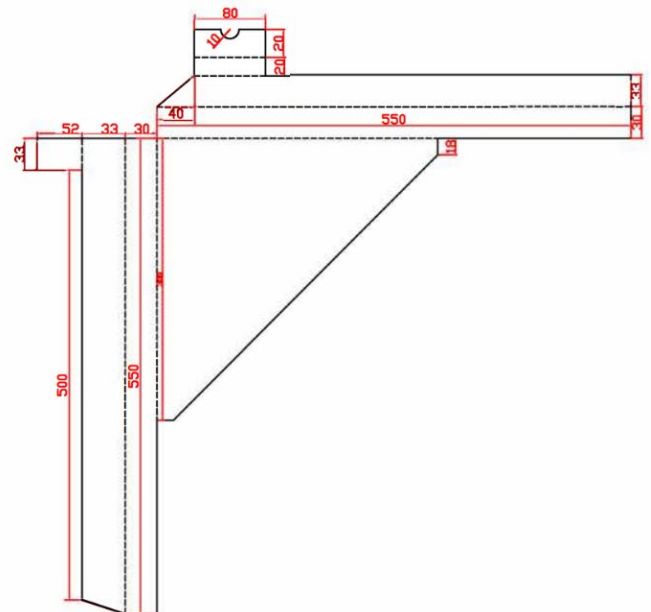
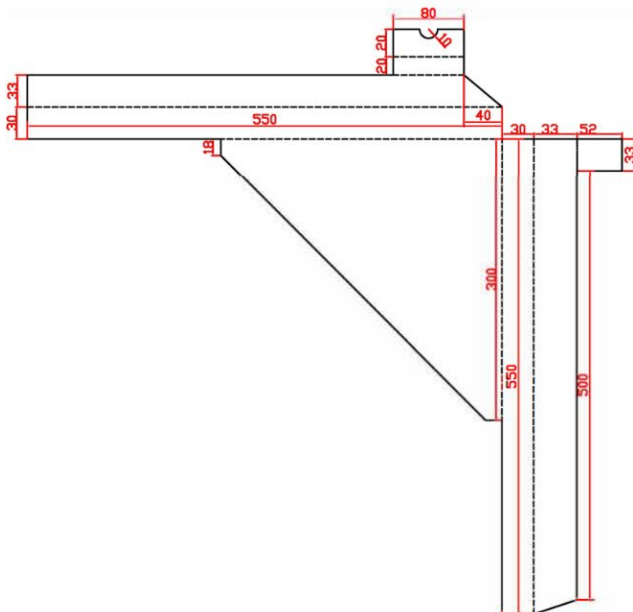
Wooden pallet



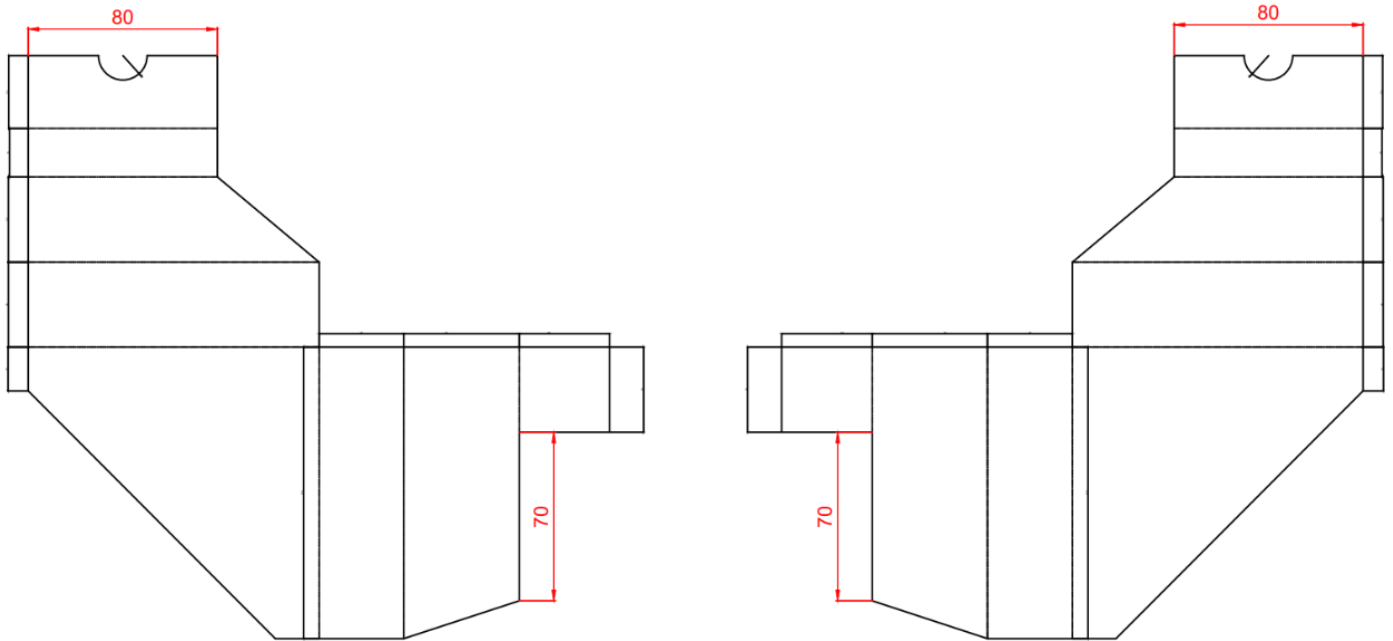
Technical requirements :

1. All wooden pallets are made of plywood material, and there should be no scratches, scratches, or other surface defects on the surface of the plywood;
2. Remove burrs and burrs; Wood should not have mold;
3. The surface of the steel nail should not expose the nail head, nail tip, bend midway, or nail at the joint of the box frame;
4. The protruding nails must be bent by 90 °, opposite to the direction of the wood fibers;
5. The bonding between each layer of plywood should be firm and there should be no cracking, tearing, or other phenomena;
6. The requirement for static load of the pallet to be $\geq 4000\text{kg}$ and dynamic load to be $\geq 2500\text{kg}$;
7. Unmarked dimensional tolerance is $\pm 3\text{mm}$; Dimensions are in millimeters;
8. Formaldehyde content $\leq 5\text{mg/L}$;
9. Print the supplier code (initial letter of the supplier name) on the tray, and add a serial number after it if it is the same;
10. The four corners and base plates of the tray do not require chamfering treatment;
11. When forming the tray, each wooden pier needs to be nailed with 60-70mm iron nails, and each wooden pier needs to be nailed with 4 nails; The nailing method is shown in the figure.

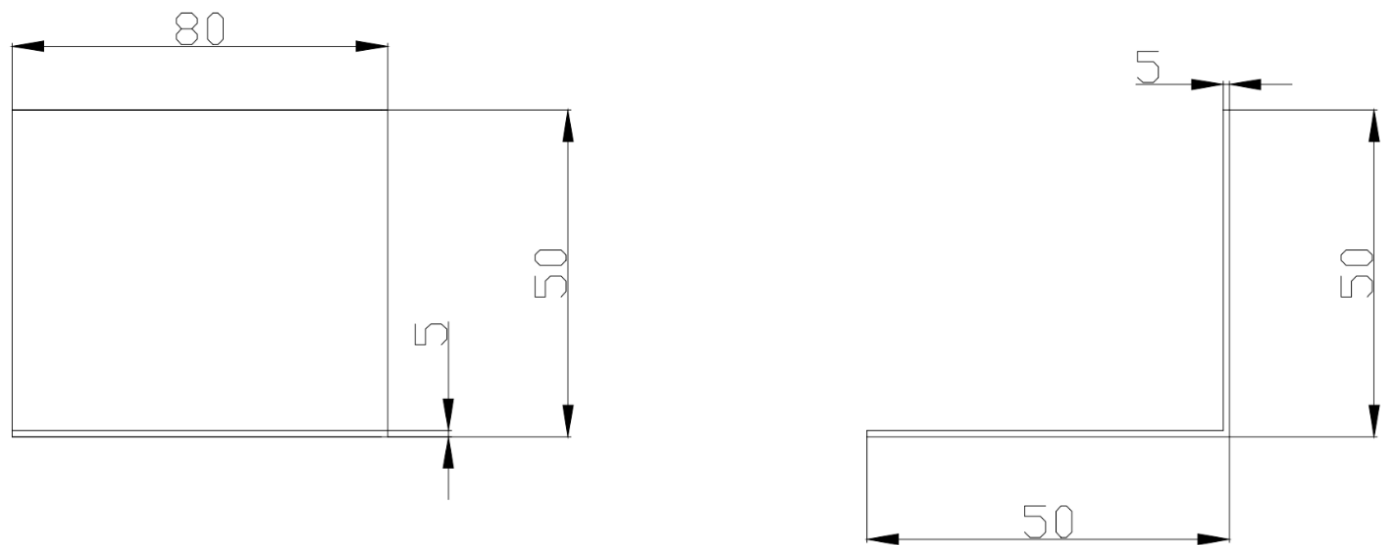
Long paper corner



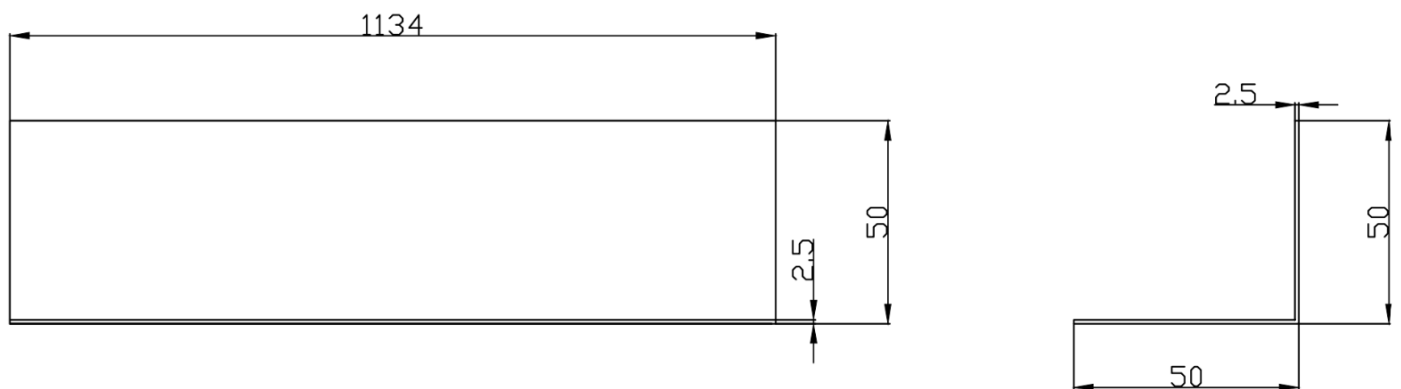
Short paper corner (30mm frame)



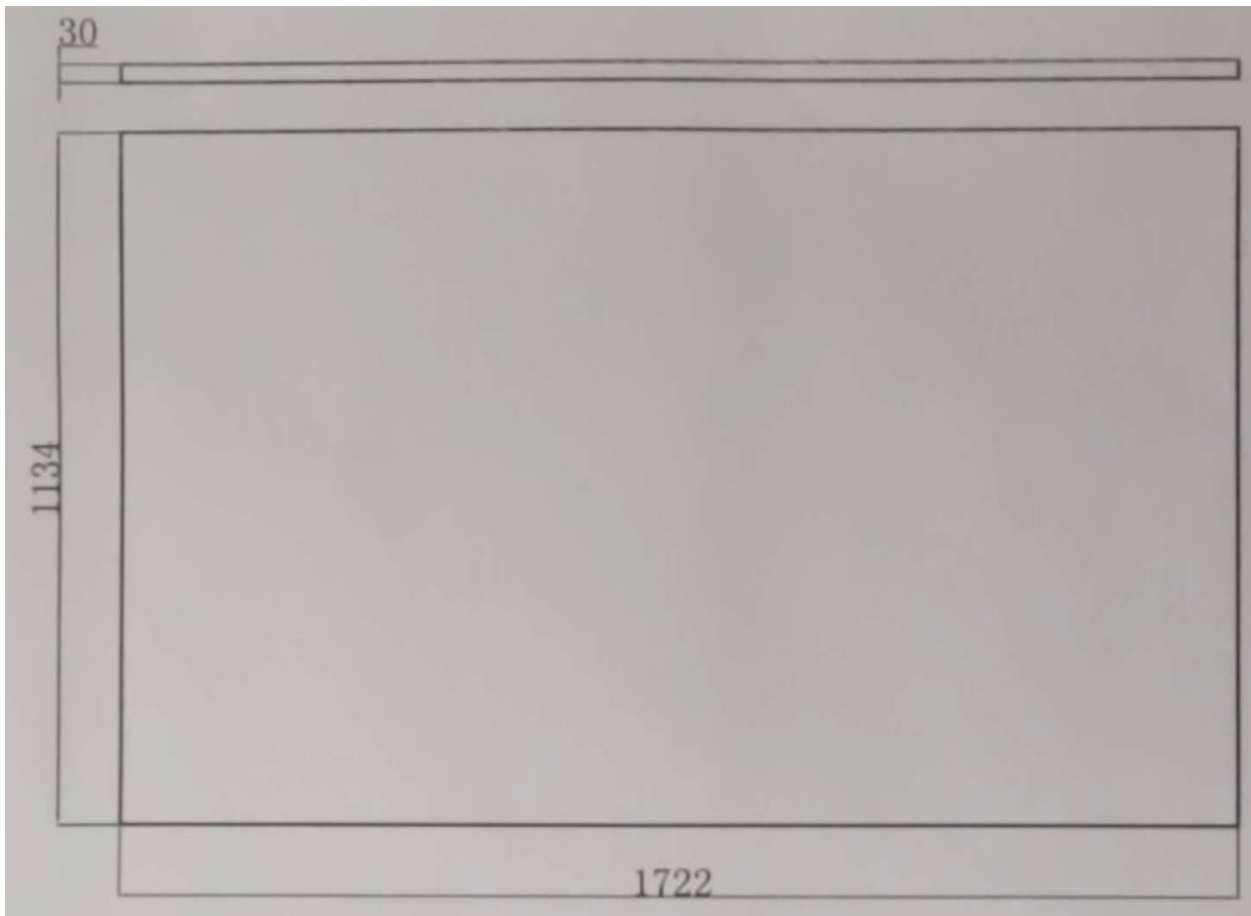
Hard corner protectors



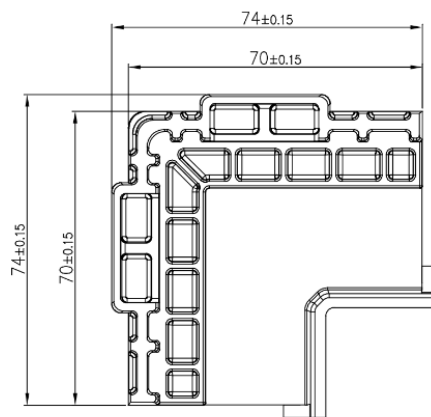
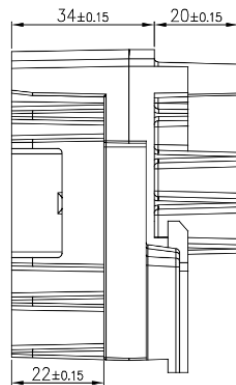
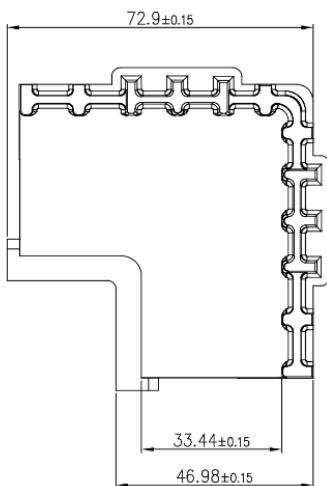
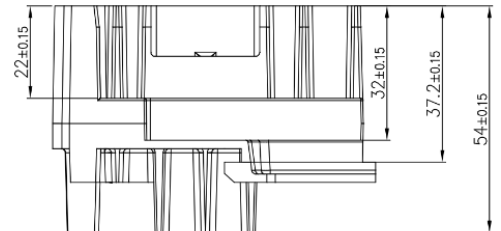
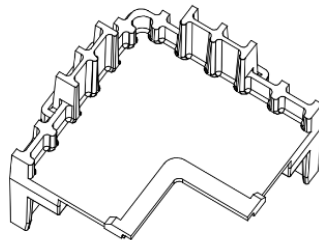
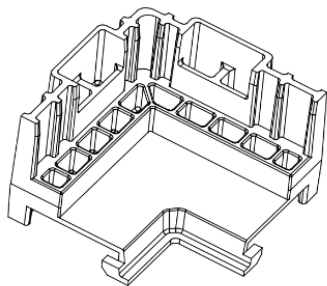
L-shaped paper corner



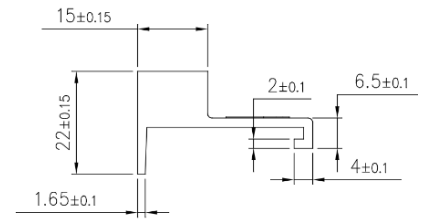
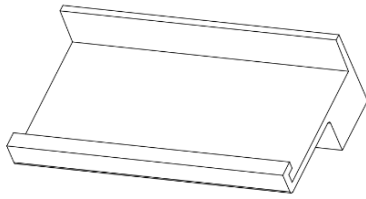
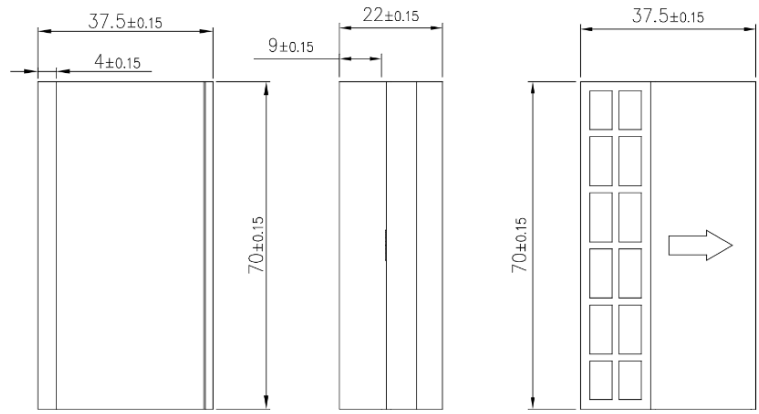
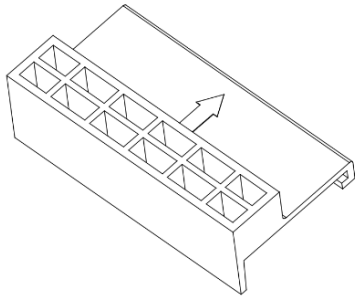
Foam



Plastic spacer-1



Plastic spacer-2





MAN-01-01077-1.0

solaredge