

solar_{edge}

SolarEdge Home

Smart Switch

for inverters with SetApp
configuration

for North America

V 1.1

Quick Installation Guide

[Datasheet](#)

[Training](#)

[Application Note](#)



Safety and Handling



Safety Information

- For indoor use only
- Keep children away from the device
- DO NOT use with medical or life support equipment
- DO NOT use in wet or damp area
- DO NOT clean with liquid
- Test the device locally for safe operation before attempting to control it remotely
- Use Copper conductors only
- Installation in a closed metal enclosure degrades wireless performance and must be avoided

Installation Placement Requirements

- The load controller is used for indoor installation and must be wall or cabinet mounted for normal operation
- Installation is allowed on up to 6560 feet of altitude

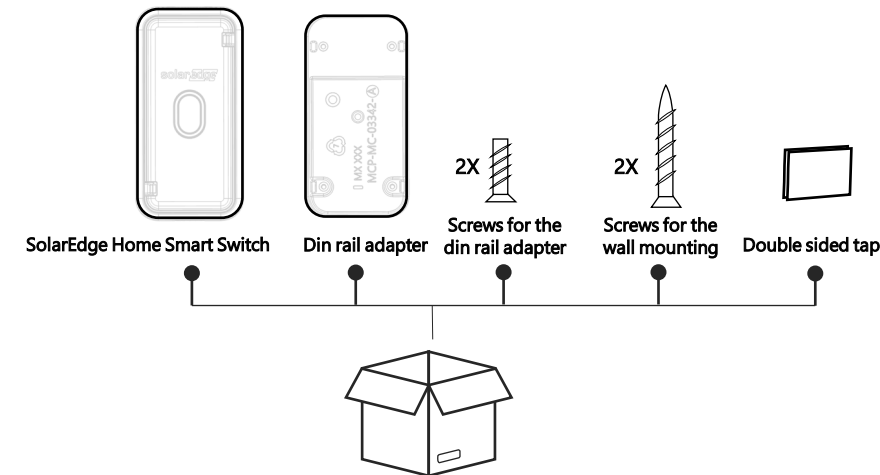
Safety Certification

For applications that comply with UL916, you must install the smart switch in a listed enclosure that meets UL50 requirements.



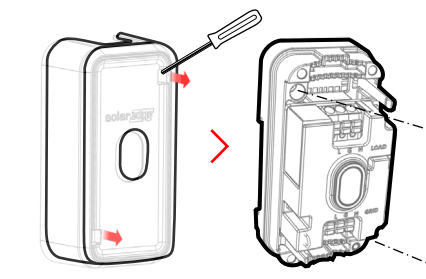
Discard this product according to local regulations or send it back to SolarEdge.

What's in the Package

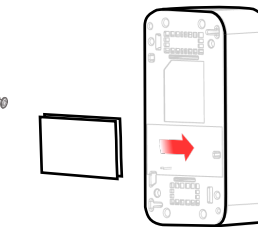


1 Mounting Options

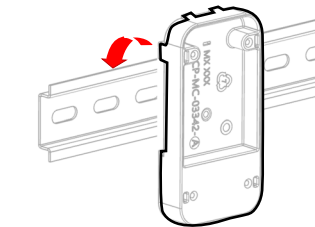
Choose one of 3 options displayed below



A. Screws



B. Double sided tape

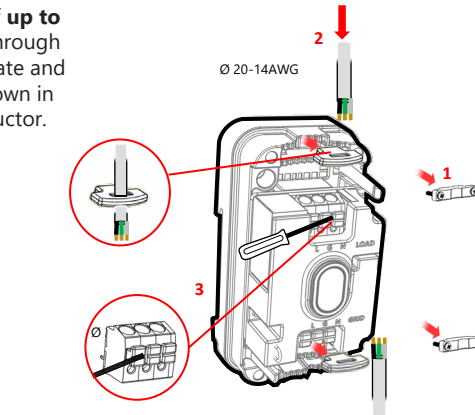


C. Din rail adapter

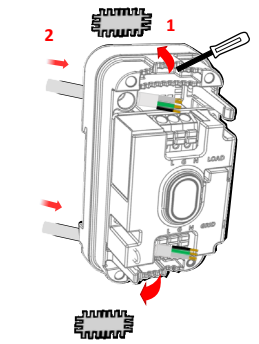
2 Cabling

Use the supplied cable rubbers to fixate cable with diameter of **up to Ø0.16 inch**. Pull the cable through the pull relief opening to fixate and press the top connector (shown in step 3) to connect the conductor.

Choose one of 2 options displayed below



A. Insert cables from top and bottom



B. Insert cables from behind



ELECTRICAL SHOCK HAZARD
This equipment should be installed by trained and certified installers only.

About SolarEdge

SolarEdge is a global leader in smart energy technology. By deploying world-class engineering capabilities and a relentless focus on innovation, we create smart energy products and solutions that power our lives and drive future progress.

[solaredge.com](https://www.solaredge.com)

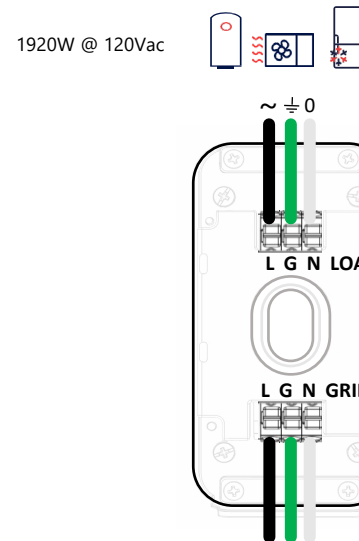
© SolarEdge Technologies, Ltd.

All rights reserved.

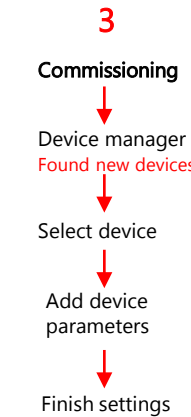
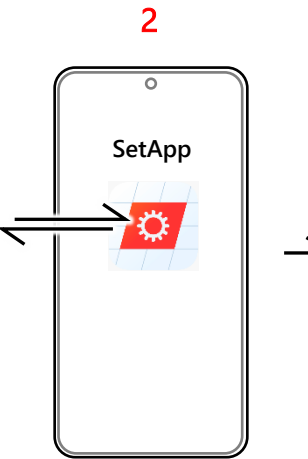
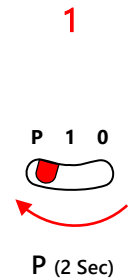
Version: 1.1, January 2023

Subject to change without notice.

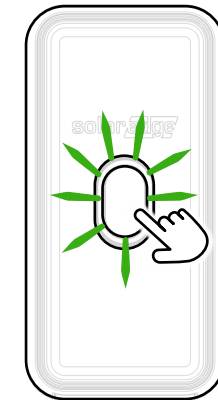
3 Wiring



4 Pair with Inverter



5 LED Indications



Button Operation

- Press for <3 seconds to operate manually
- Hold >10 seconds to reset

LED Indications

Blinking Blue – scanning for a network or connection with Home Network is lost & load off
Blinking Green – scanning for a network or connection with Home Network is lost & load on
Blinking Blue 30 seconds – received request of identification
Blue – connected to Home Network & load off
Green – connected to Home Network & load on
Blinking Red – error
Flickering Blue – standby
Flickering Green 5 times – reset done

Specifications

System Requirements

- Inverter with SolarEdge Home Network wireless connection
- SolarEdge SetApp: smartphone application for connection to inverter and firmware >4.18.xx
- MySolarEdge: smartphone application for socket configuration and status reading
- iOS 10 or later or Android 6.0.1 or later

AC voltage	90 ~ 250 Vac
AC frequency	60 Hz
Switch Rating	16A
Poles	1
Relay switching cycles	> 20,000
Operating hours	50,000hr
Installation altitude	2000m
Measurement accuracy	1%

Support Contact Information

If you have technical problems concerning SolarEdge products, please contact us:
<https://www.solaredge.com/service/support>
Subject to change without notice.
Copyright © SolarEdge Inc.
All rights reserved. January 2023.