

Home Hub 3 Ph Inverter Portia Board Support kit

This manual describes how to replace the Inverter Portia Board. P/N **FLD-AG-48B-PRTA-A-01**

Kit Contents

- Home Hub 3 PH Inverter Portia Board Support kit.

Required Tools

- Torque wrench
- PH2 Philips screwdriver

Turning OFF the Inverter

1. Turn the ON/OFF/P Toggle Switch OFF (0).



Figure 1: ON/OFF/P toggle switch OFF

2. Disconnect AC power to the inverter by turning OFF the main circuit breakers or disconnecting the fuses in the power distribution panel and wait for five minutes for the DC Voltage inside the inverter to drop to a safe level before proceeding to the next step. Lock the power distribution panel and keep the key in your pocket.
3. Turn OFF the battery.
4. Use a 4 mm Allen hex bit to loosen all 10 screws in the following sequence. Turn all the screws half a turn and remove the cover.

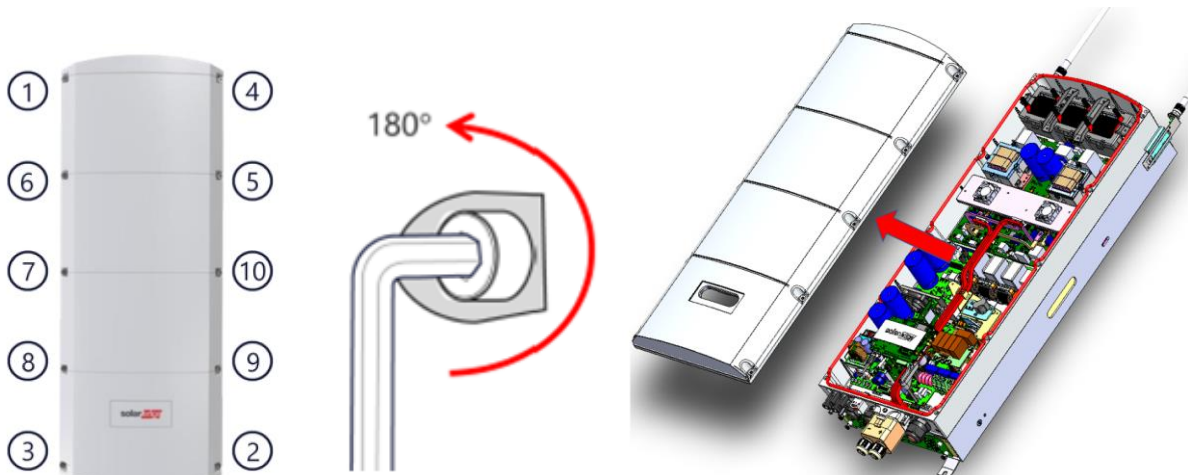


Figure 2: remove Cover

5. Keep the cover and screws for reassembly.

Removing the Damaged Portia Board

1. Before disconnecting any cables, make sure they are properly marked. If not, mark each cable with its position.

2. Remove the Sub-Giga Module Card. Do not disconnect the communication cable. Carefully store the Sub-Giga Module Card in a safe place.

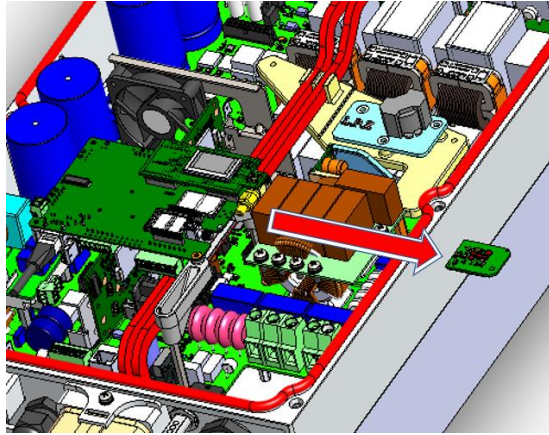


Figure 3: remove Sub-Giga Module Card

3. Disconnect all the cables from the Portia Board.

NOTE
Some cable connectors are fitted with locking mechanisms. For those cables make sure to press the lever to release the locking mechanism before trying to disconnect the connector from the socket.
Never grip the wires to remove the connector from the socket.



Figure 4: connector locking mechanism

4. Use a PH2 Philips screwdriver to remove the four screws holding the Portia Board in place. Keep the screws for reassembly.

CAUTION!
Make sure that no screws fall into the inverter.

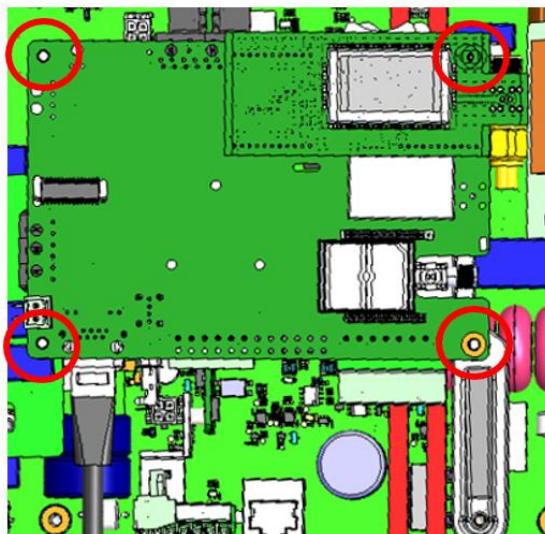


Figure 5: remove four screws

5. Remove the Portia Board.

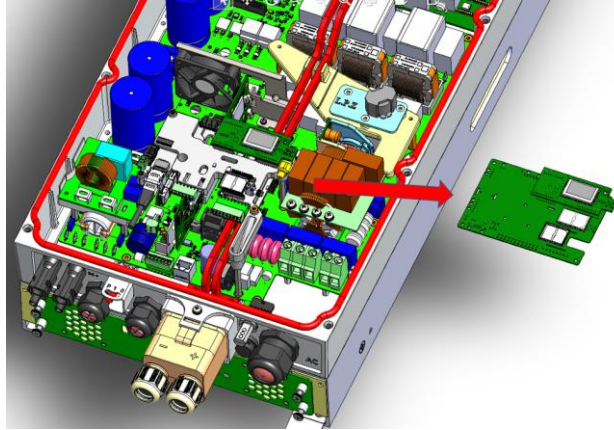


Figure 6: remove the Portia Board

6. Discard the damaged Portia Board.

Installing the Replacement Portia Board

1. Remove the new Portia Board from the packaging.
2. Place the new Portia Board onto position and insert the four screws.



CAUTION!

Make sure that no screws fall into the inverter.

3. Insert the screws and use a PH2 Philips screwdriver bit and a torque wrench to tighten the four screws to a torque of 1.1 N*m / 9.47 lbf*in.
4. Reconnect all the connectors to the sockets on the Portia Board. Pull all the cable connectors gently to make sure they are properly connected.
5. Replace the Sub-Giga Module Card.

Remounting the Cover Assembly

1. Place the cover in position and insert the 10 screws.
2. Use a 4 mm hex bit and a torque wrench to tighten the 10 screws to a torque of 4 N*m / 35.4 lbf*in.
3. Tighten the screws in the following sequence:

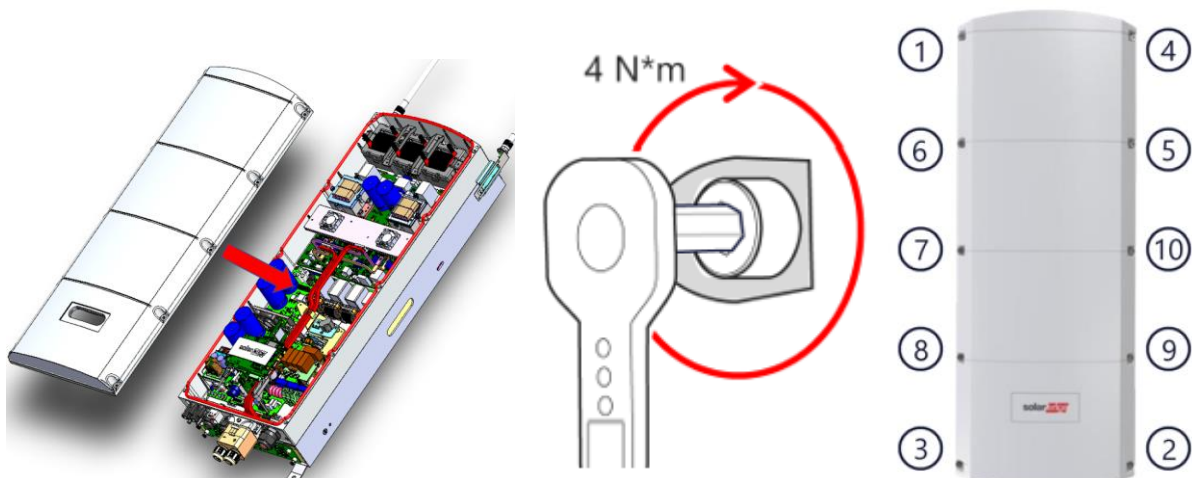


Figure 7: screw tightening sequence

4. Unlock the power distribution panel and turn ON the main AC circuit breaker or connect the fuses.
5. Turn the ON/OFF/P Toggle Switch of the Home Hub 3 Ph Inverter to ON (1).



Figure 8: ON/OFF/P toggle switch ON