

Scan for updates



Scan for Datasheet



Support Contact Information

In case of any technical issues with SolarEdge products, please contact us at:
<https://www.solaredge.com/service/support>



MAN-01-01042.1.4



Quick Installation Guide

SolarEdge Fast Mount 36 (SFM36)

for North America

© SolarEdge Technologies, Ltd.

All rights reserved.

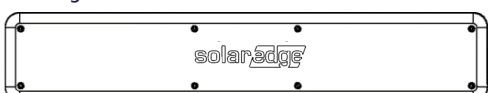
Version: 1.4 April 2024: added inverter models that can be attached to top and bottom mounting brackets, added a Note and conduit nut wrench to tools.

Subject to change without notice.

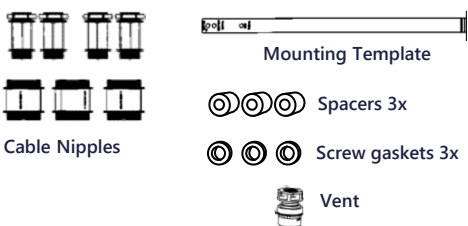
What's in the Package



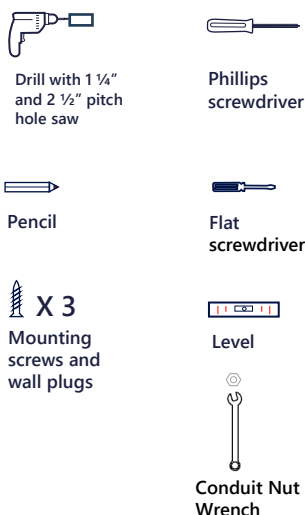
SolarEdge Fast Mount 36



SolarEdge Fast Mount 36 Cover

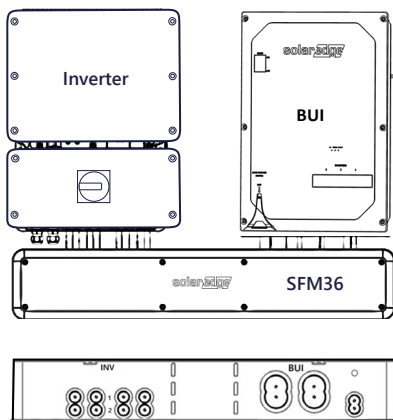


Required Tools

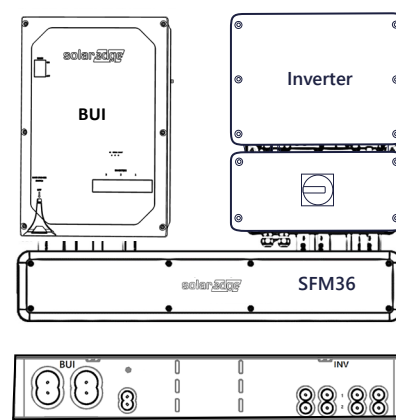


Available Configurations

Configuration 1



Configuration 2



Note: Installation procedure is identical for configurations 1 and 2, illustrations use configuration 1 as an example.

Safety and Handling Instructions

- Read this entire document before installing the SolarEdge Connection Unit. Failure to do so or to follow any of the instructions in this document can result in electrical shock, serious injury, or death, or may damage the SFM36 and other property, it can also lead to warranty void.
- Do not discard this document! After installation, keep it adjacent to the SFM36 for future reference!
- Before operating the SolarEdge Inverter and the Backup Interface (BUI), ensure that they are connected to a grounded, metal, permanent wiring system, or an equipment-grounding conductor must be run with the circuit conductors and connected to the equipment grounding terminal or lead. Grounding of the SFM36 itself is optional – see step 3.3.
- Opening the SFM36 under power must be performed only by qualified service personnel familiar with the SFM36.

Drilling Knockouts and Mounting the SFM36

1

SolarEdge Fast Mount (SFM36) aims to facilitate outdoor cabling of SolarEdge systems. For configuration 1 BUI on the right, use upper-side knockouts. For configuration 2 with BUI on the left, turn the SFM36 upside down and use lower-side knockouts.

1. Measure the clearance for the inverter and the BUI.
2. Drill the knockouts for the Inverter and BUI nipples.
3. Level the SFM36.
4. Mount the SFM36 to the wall using the three screws.

Knockouts for inverter models:

- SE3800H-USxxxxx4
- SE5000H-USxxxxx4
- SE5700H-USxxxxx4
- SE6000H-USxxxxx4
- SE7600H-USxxxxx4

Knockouts for inverter models:

- SE10000H-USxxxxx4
- SE11400H-USxxxxx4
- SExxxxH-USxxxxx5

BUI knockouts for inverter models: SExxxxH-USxxxxx5

BUI knockouts for inverter model: SExxxxH-USxxxxx4

Spacers used with inverter models: SExxxxH-USxxxxx5

Screw gasket

Mounting the Inverter, BUI, Battery and Connecting the Nipples

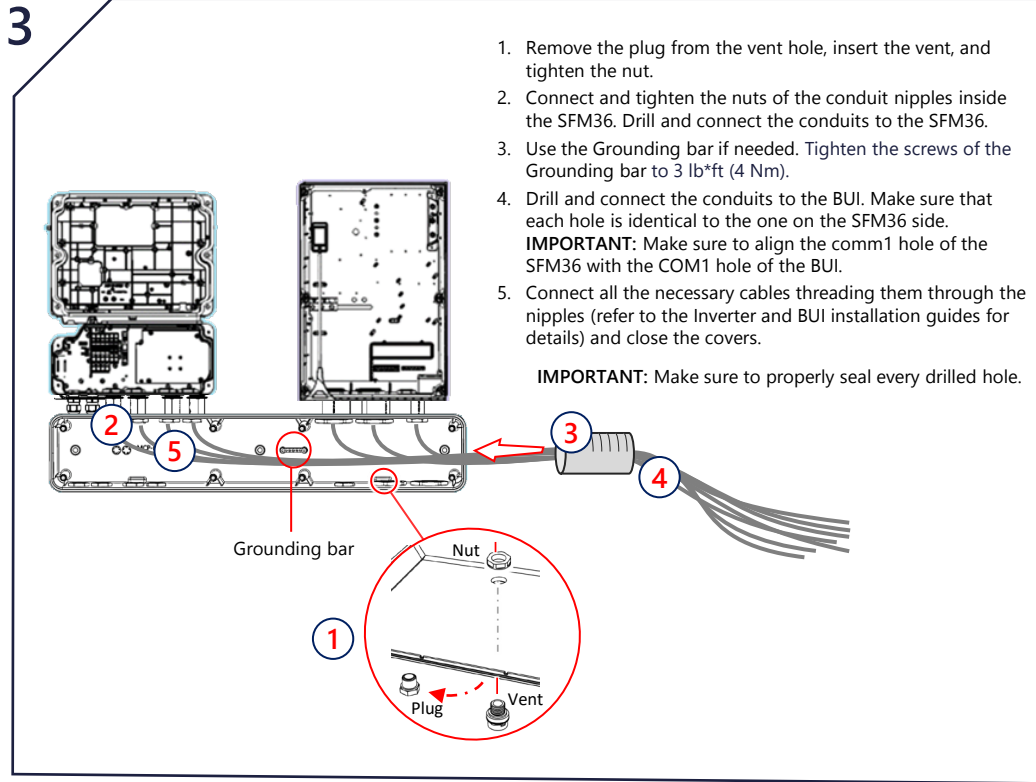
2

1. Use the supplied template for mounting the inverter, BUI, and battery for both configurations.
2. Drill the mounting holes for the inverter's and BUI's mounting brackets. Mount the template and the mounting brackets to the wall with supplied screws (two screws at least for each bracket).
3. Connect the nipples to the BUI and the inverter. Close the nipple nuts.
4. Hang the inverter and the BUI onto the brackets. The nipples will go through the knockouts you made.

Note: Please keep a clearance of 8" between the battery and the fast mount.

Note: We recommend connecting nipples loosely on both sides, and once inserted, tighten them firmly for a secure connection.

Connecting the Vent and Cables



Closing the SFM36

