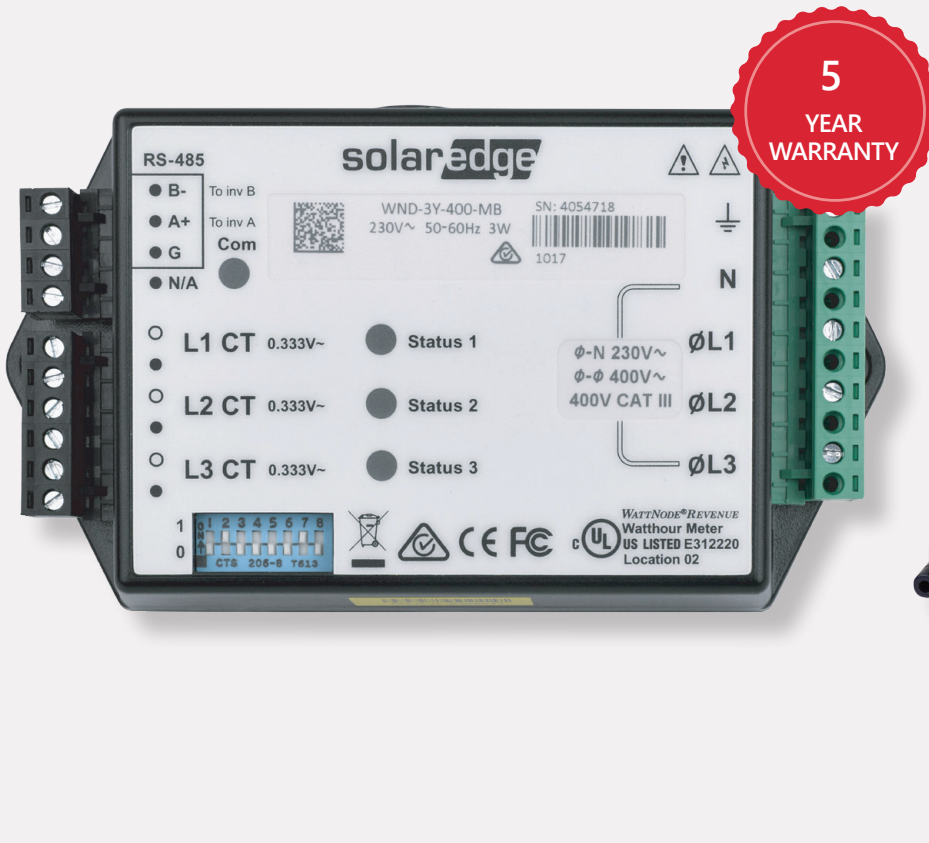


Energy Meter with Modbus Connection

SE-WND-3Y400-MB-K2

ACCESSORIES



Energy Meter with Modbus Connection for SolarEdge Installations

- High accuracy meter readings for production/consumption monitoring
- Supports residential, commercial and utility-size installations
- Import/Export meter readings for export limitation functionality
- Support RS485 120Ω line termination
- Small and easy to install - fits in standard electrical panel

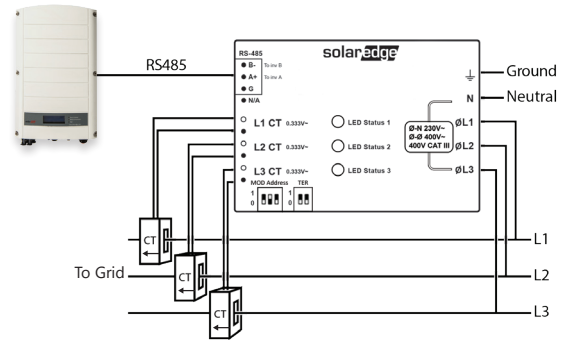
Energy Meter with Modbus Connection

SE-WND-3Y400-MB-K2

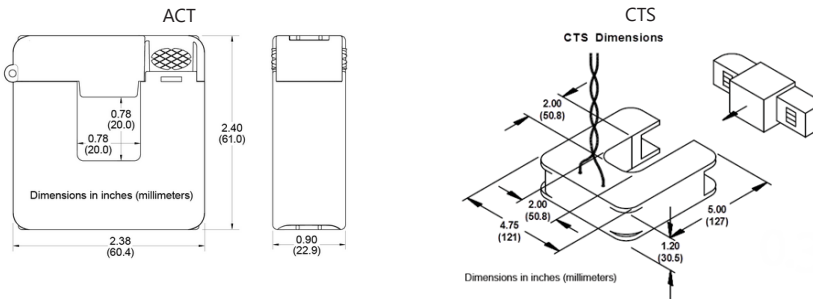
WHEN ORDERING A METER, ORDER CURRENT TRANSFORMERS AS WELL:

CURRENT TRANSFORMER MODEL(*)	RATED RMS CURRENT	DIMENSIONS (INTERNAL / EXTERNAL)
SE-CTML-0350-070	70 A	9 x 8.9 mm / 42.4 x 30.5 mm
SE-ACT-0750-50	50 A	20 x 20 mm / 61 x 60.4 mm
SE-ACT-0750-100	100 A	
SE-ACT-0750-250	250 A	
SE-CTS-2000-1000	1000 A	50.8 x 50.8 mm / 121 x 127 mm

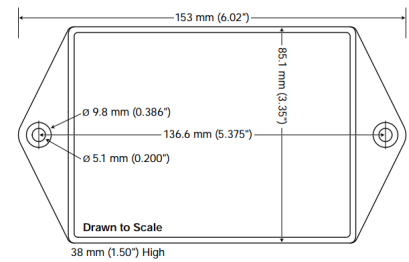
* One current transformer per phase; for other ratings contact SolarEdge
 ** All CT twisted pair lead wire length are 2.4 meters.



Current Transformer Dimensions



Meter Dimensions



SE-WND-3Y400-MB-K2

UNITS

ELECTRICAL SERVICE

Nominal Voltage Range	Line to Line	400	Vac
	Line to Neutral	230	Vac
Operating Voltage Range	Line to Line	320 – 460	Vac
	Line to Neutral	184 – 264	Vac
AC Frequency		48 - 62	Hz
Grids Supported - Single Phase ; Three Phase ⁽¹⁾		L / N / PE ; L1 / L 2 / L3 / N / PE	
Power Consumption (typ.)		1.8	W

COMMUNICATION

Supported Communication Interfaces		RS485	
Response time		≤1 ⁽²⁾	sec
Default Device ID (Modbus)		2	
RS485 line termination		120	Ω

ACCURACY (@25°C, PF: 1)⁽³⁾

1% - 100% of Rated CT Current		±1.0	%
-------------------------------	--	------	---

STANDARD COMPLIANCE

Safety		IEC 61010-1, CAN/CSA-C22.2 No. 61010-1-04, IEC 61010-1:2010 (3rd Edition)	
Immunity		EN 61326, EN 61000-4-2, EN 61000-4-3, EN 61000-4-4, EN 61000-4-5, EN 61000-4-6, EN 61000-4-11	
Emissions		FCC Part 15: Class B, CISPR11: 2009: Class B	
Export Limiting Schemes		Engineering Recommendation G100. Issue 1 Amendment 1 2017 by ENA London UK	

INSTALLATION SPECIFICATIONS

Dimensions (HxWxD)		85 x 153 x 38	mm
Weight		310	gr
Enclosure type		High impact, ABS and/or ABS/PC plastic UL 94V-0, IEC FV-0	
Operating Temperature Range		-40 to 75	°C
Relative Humidity (noncondensing)		5 - 90	%
Protection Rating		Indoor (Outdoor when installed in an outdoor enclosure)	
Mounting Type		DIN Rail / Wall mount	

(1) PE (Protective Earth) connection is not required for meter operation

(2) When meter is connected at grid connection point, and when RS485 is used for multiple inverters

(3) Using SE-ACTL-0750 CT models