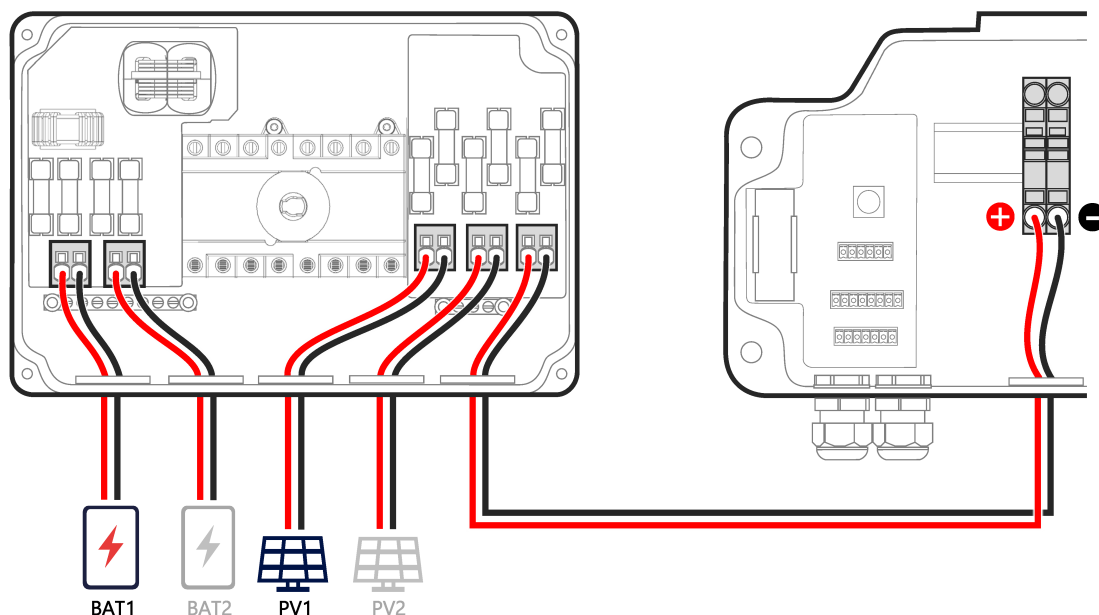


Application Note: SolarEdge Combiner Box Use Cases

There are two options available to installers when installing a battery as part of a SolarEdge system.

With the Combiner Box

If one or more LG Prime batteries, or three SolarEdge Home Batteries are to be connected, connect the DC cables from the battery/batteries and the Power Optimisers to the Combiner Box. Then, connect the cables from the Combiner Box to the DC terminals inside the inverter's Connection Unit.



For detailed installation and connection instructions see: <https://www.solaredge.com/sites/default/files/se-combiner-box-installation-guide-aus.pdf>

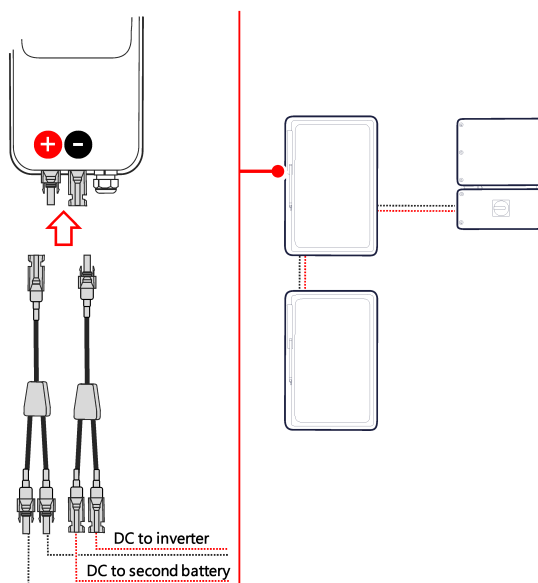
Without the Combiner Box

When one or two SolarEdge Home Batteries are to be connected, the DC cables from the battery and Power Optimisers can connect directly to the DC terminals inside the inverter's Connection Unit.

In this case, the DC supplies from the battery/batteries and Power Optimisers must be combined because the inverter has a single DC input.

Power Optimisers - If there are two or more PV arrays, combine their DC cables into a single home run cable.

SolarEdge Home Batteries - When installing two SolarEdge Home Batteries, use branch connectors (available from SolarEdge).



As the inverter's Connection Unit has a single DC input, crimp together the DC cables from the Power Optimisers and the batteries into one bootlace ferrule.

