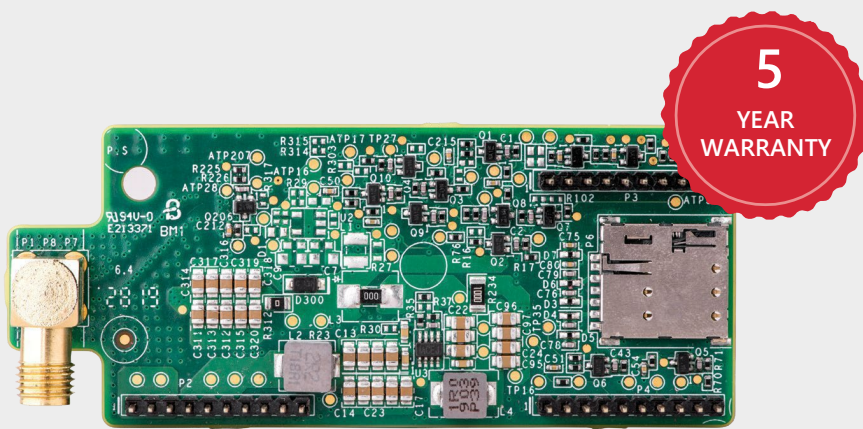


# Cellular Plug-in with Data Plan

For Europe



COMMUNICATION

## Cellular Internet Connectivity for Commercial and Residential Installations

- Compatible with SetApp-enabled inverters
- Connects SolarEdge inverters wirelessly to the internet
- No need for internet infrastructure at site
- Installed within the inverter enclosure for outdoor resilience, or in the communication gateway
- Supports high bandwidth monitoring of inverters, Power Optimizers, batteries, meters and weather stations
- Enables remote analysis and troubleshooting
- 2-year data plan is included
- Optional 1-year extension plans after the original 2 years plan expires<sup>(1)</sup>
- Comprehensive coverage<sup>(2)</sup> in EU

# / Cellular Plug-in with Data Plan and Extension Plans for Europe

Part Number		CELL-B-R02-EU-R-S3, CELL-B-R02-EU-R-S5	
Model Number		CELL-B2	
COMPATIBLE INVERTERS		SEXXXX-XXXXXBXX4, SEXXXK-XXXXXBXX4 (INVERTERS WITH SetApp CONFIGURATION)	
Monitoring		Continuous connection with 5 minute telemetry from all connected inverters	
Supported Residential Systems (CELL-B-R02-EU-S-S3)		1 inverter, up to 45 Power Optimizers, and 1 meter	
Supported Residential StorEdge systems (CELL-B-R02-EU-S-S3)		1 inverter, up to 30 Power Optimizers, 2 batteries and 1 meter	
Number of Monitored Inverters with a Single Cellular Plug-in		Commercial: Up to 32 inverters, limited by the system AC size <sup>(2)</sup> Residential: 1 inverter	
Supported Commercial Systems (CELL-B-R02-EU-S-S3)		< 50 Up to 2 inverters, up to 94 dual Power Optimizers, and 1 Export/Import meter	
Supported Commercial Systems (CELL-B-R02-EU-S-S5)		< 500 Up to 18 inverters, up to 931 dual Power Optimizers, and 1 Export/Import meter	
Data Plan Duration		2 years prepaid plan (optional extension plans can be purchased after the 2 year plan expires)	
Extension Data Plan Duration		1 year prepaid plan (CELL-R01-EU-EXT-S3)   1 year prepaid plan (CELL-R01-EU-EXT-S5)	
RF PERFORMANCE		OPERATING FREQUENCY	
		Band/ Freq (MHz)	Modem Transmit / Modem received
LTE Cat-1 FDD		2100 (B1)	1920-1980 / 2110-2170
		1800 (B3)	1710-1785 / 1805-1880
		2600 (B7)	2500-2570 / 2620-2690
		900 (B8)	880-915 / 925-960
		800 (B20)	832-862 / 791-821
		700 (B28A)	703-718 / 758-773
WCDMA		2100 (B1)	1920-1980 / 2110-2170
		900 (B8)	880-915 / 925-960
GSM		900 (EGSM)	880-915 / 925-960
		1800 (DCS)	1710.2-1784.8 / 1805.2-1879.8
Maximum Transmit Power	LTE FDD	23 dBm ± 2dB	
	WCDMA	24 dBm +1dB/-3dB	
	GSM	33 dBm ± 2dB	
Receiver Input Sensitivity Cat-1	LTE FDD	-97	
	WCDMA	-109	
	GSM	-108.6	
Bandwidth		1.4 - 20	
Modulation	LTE	Downlink: QPSK\16QAM\64QAM, Uplink: QPSK\16QAM	
	WCDMA	Downlink: QPSK, Uplink: BPSK	
	GSM	Downlink: GMSK, Uplink: GMSK	
ANTENNA			
Dual Antenna Bands		690-960 / 1710-2700	
Antenna Type		Outdoor	
Antenna Connector		RP-SMA or N plug <sup>(3)</sup>	
VSWR		≤4.0	
Gain		2	
Polarization		Vertical	
Material		PC Lexan 503R-WH5151L or WH8G952 Sabic	
Dimensions (Length x Diameter)		7.87 x 0.78 / 200 x 20	
STANDARD COMPLIANCE			
EMC and Radio		Global: GCF, Europe: CE, Australia & New Zealand: RCM, Russia: FAC	
RoHS		Yes	
INSTALLATION SPECIFICATIONS			
Dimensions (L x W x H)		3.07 x 1.27 x 0.55 / 78.2 x 32.5 x 14.2	
Operating Temperature		-40 to +85 / -40 to +185	
Mounting		Built into the inverter or purchased separately	
Power Consumption		LTE: 2.8 (@23dBm output power) GSM: 2.4 (@33dBm output power) WCDMA: 2 (@24dBm output power)	
SIM CARD HOLDER			
Type		Nano Sim	

(1) Optional 1-year extension plans should be purchased separately. Part numbers: CELL-R01-EU-EXT-S3 for residential systems and CELL-R01-EU-EXT-S5 for commercial systems

(2) Customer is responsible for verifying that the site location has adequate mobile coverage by the third-party service provider prior to any installation

(3) For larger systems, use multiple cellular plug-ins

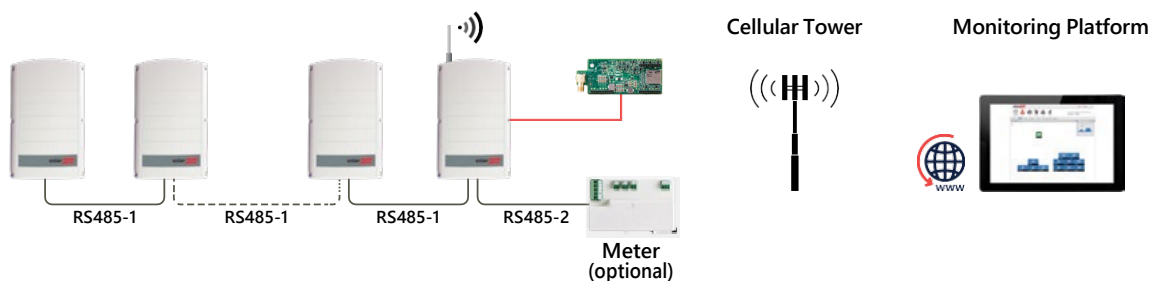
(4) Two types of antennas may be supplied interchangeably

(5) Information concerning the Data Plan's terms & conditions is available in the following link:

<https://www.solaredge.com/sites/default/files/se-communication-plan-terms-and-conditions-eng.pdf>

# / Cellular Plug-in with Data Plan and Extension Plans for Europe

## Single or Multiple Commercial Inverters



## Single or Multiple Residential Inverters

