

The Smart Energy Leaders



Global Expertise and Leadership

- // **#1 global PV inverter supplier** (\$ revenues, according to IHS, Q1, '20), with installations in over 130 countries worldwide
- // **Strong and committed presence in over 25 countries**, with smart energy expertise across local sales, service, marketing, and training teams
- // **A solar and renewable energy leader**, with a relentless focus on providing innovative, integrated solutions
- // **Complete residential solution and support from a single vendor**, including smart modules, single/three phase inverters, battery storage, smart energy products, EV charging, energy meters, and more

World-class Technology, from PV to Grid

- // **More energy production**, with residential inverters reaching a record 99% efficiency
- // **Exceptional reliability**, backed by long-term standard inverter warranty of 12 years, extendable to 25 years
- // **Peace of mind with market-leading safety**, providing built-in arc detection and SafeDC™ for automatic module DC voltage shutdown when AC is off
- // **All system components designed to work together** for full PV optimization, safety and monitoring, with no need for additional hardware

solaredge

/ SolarEdge Advantages

Excellent Thermal Design

More power

- More energy with record-breaking 99% weighted efficiency for residential inverters

Less heat

- Superb heat dissipation resulting in minimal inverter clearance requirements

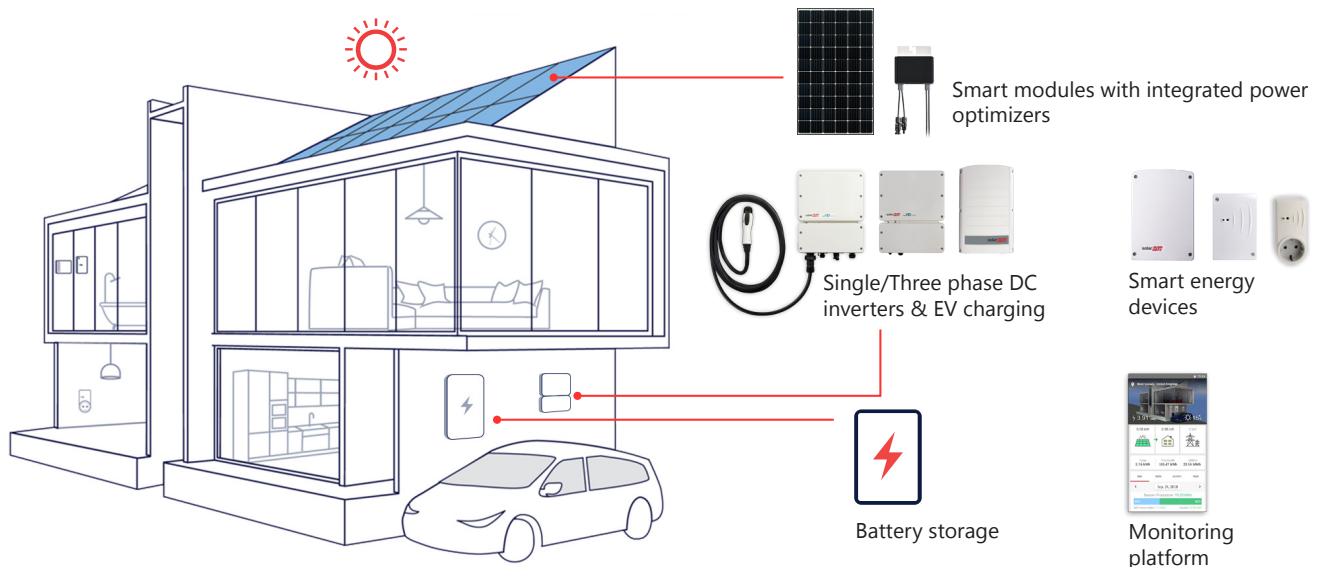
Longer warranties

- Standard inverter warranty of 12 years, with low cost extensions available up to 25 years

Complete Residential Offering

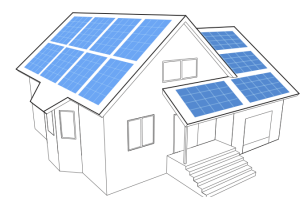
Simple, flexible, and future-proof

- System, product, and service, all from a single vendor
- Seamless integration of all system components
- Suitable for all rooftops, from just three modules to large, high power installations
- Supports easy upgrades to capabilities beyond just PV



Why Full Module-Level Optimization is a Must

- Substantially enhanced safety solution – SafeDC™, arc detection, optional automatic rapid shutdown
- Module-level monitoring to ensure system yield and reduced O&M costs
- Maximum design flexibility with support for multiple-orientation, uneven strings length, and longer string design
- Inherent mitigation against module mismatch and production optimization in changing shading situations
- 2% more energy in completely unshaded systems



Flexible system design



Module-level monitoring

Module mismatch sources



Transportation damage



Different tilt & orientation



Thermal mismatch



Partial shading



Soiling



Manufacturing tolerance