



# SolarEdge Commercial Storage System CSS-OD 197



## Go big

The SolarEdge CSS-OD 197 is a 197 kWh-rated commercial and industrial energy storage solution for indoor or outdoor deployment. It scales to 4 MWh per site, serving the needs of a wide variety of applications.

## Slash energy costs and maximize solar energy ROI

The system helps PV system owners maximize the ROI of their investment with integrated system intelligence and multiple energy optimization modes that slash energy costs.

## Advantages



High energy  
density and  
scalability



Integrated  
intelligence for  
maximum savings



Seamless  
installation and  
commissioning



Comprehensive  
safety and  
cyber security



Peace of  
mind



## High energy density

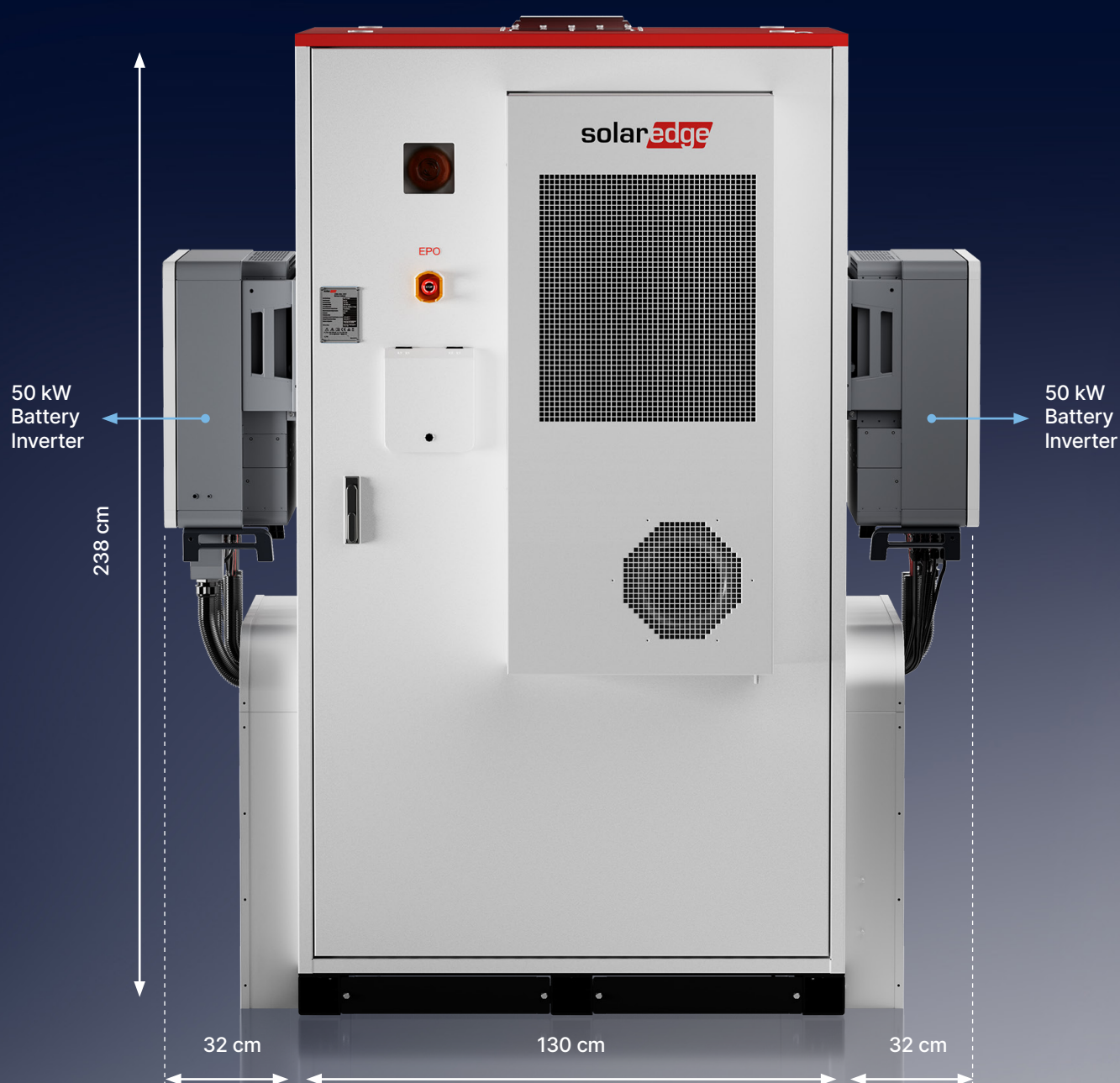
The CSS-OD 197 cabinet provides 197 kWh of storage capacity in just a 2 square meter footprint. This enables asset owners to deploy the storage capacity they need in space-efficient configurations.

The system scales to 20 cabinets per deployment, for up to 4 MWh of storage. It is available with 50 kW or 100 kW of inverter capacity, so installers and system operators can choose the maximum C-Rate (0.5 or 0.25) that best aligns with their needs.

---

## Scalable to 4MWh

---



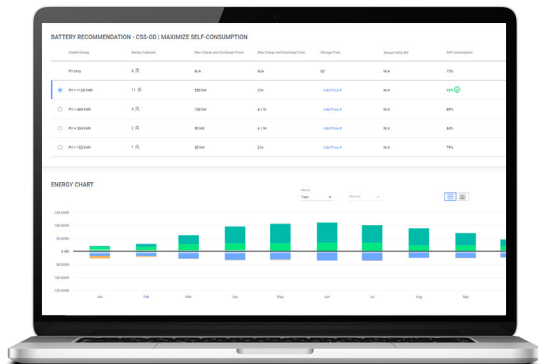


## Integrated intelligence

The CSS-OD 197 comes with an integrated set of SolarEdge applications that accelerate and optimize system deployment and management.

### 1 SolarEdge Designer

Recommends the optimal deployed CSS-OD storage capacity for maximum system ROI, according to site characteristics such as installed solar capacity and energy consumption patterns.



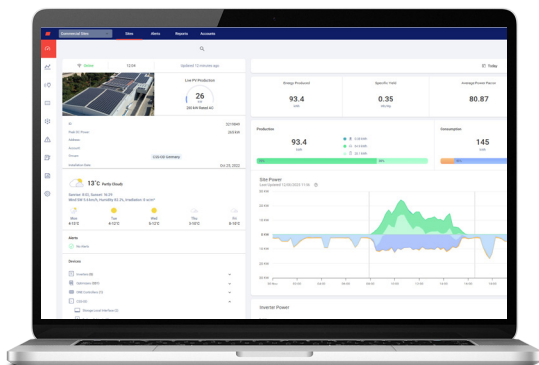
### 2 CSS-OD Local Interface

Located on the front of the system cabinet, the Local Interface is a user-friendly touch-screen with a step-by-step wizard and error diagnostics that enable smooth on-site installation, configuration, and maintenance.



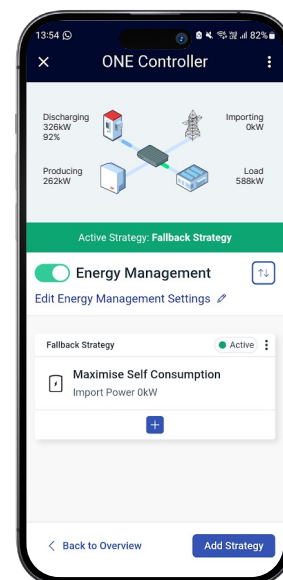
### 4 SolarEdge ONE for C&I

A cloud-based energy optimization platform that provides advanced, monitoring and management of a site's entire energy footprint. It supports multiple energy optimization modes including maximized self-consumption, peak shaving, tariff optimization, export and import limits.



### 3 SolarEdge Go

A mobile application that enables remote CSS-OD commissioning and connection of related site devices, such as ONE Controller for C&I and inverters. Go has a user-friendly, step-by-step wizard and error diagnostics that enable smooth remote system configuration.








## Comprehensive safety

### A multi-layered approach to battery protection

The CSS-OD 197 is engineered with multiple, integrated safety features that are designed to detect and address potential threats at four distinct levels: cell, module, cluster and cabinet.

Protection Pillars	Safety Mechanism	Location of Safety Mechanism			
		Cell	Module	Cluster	Cabinet
 <b>Thermal Runaway prevention</b>	Cell Passive Balancing	✓	✓	✓	
	Cell Temperature Sensors	✓			
	NOVEC 1230		✓	✓	
	CO Detector				✓
	Smoke Detector				✓
	Heat and Humidity Sensor				✓
	Fire Extinguishers 1 and 2				✓
	Fire-fighting Valve				✓
	EPO (Emergency Power-off)				✓
	Pressure-relief Valve				✓
	Pressure Relief Panel				✓
 <b>Electrical Safety</b>	DC Relay			✓	
	DC Breaker (MCCB)			✓	
	Reverse Polarity Protect.				✓
	DC Busbar Temp. Sensing			✓	
	DC Surge Protection Device			✓	
	AC SPD (HVAC AUX)				✓
	Flood Detector				✓
 <b>Enclosure Protection</b>	Cell Physical Enclosure		✓		
	HVAC System				✓
	Door Switch				✓
	Ingress Protection				✓
	Acoustic Visual Alarm				✓



## Cyber Security

The system connects to the cloud via the SolarEdge ONE Controller for C&I, an onsite device designed to provide integrated cyber defenses and secure communications for the battery and other elements of a site's solar energy infrastructure.



## Peace of mind

The system is backed by an extensive performance warranty that guarantees 70 % SoH for 7000 cycles or 10 years. It has a powerful, air-cooled HVAC system that keeps internal components operating within an optimal temperature range over a wide range of external temperatures.